

ALL. 1

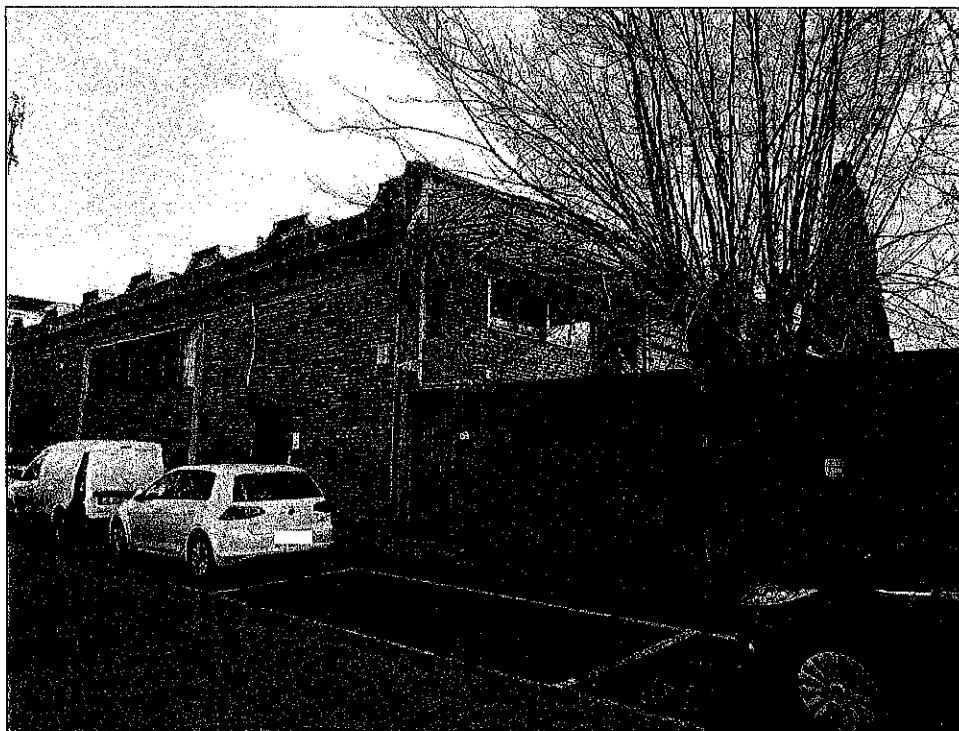


Foto n° 1 – Vista esterna da via delle Tre pietre



Foto n° 2 – Vista esterna da via delle Tre pietre



Foto n° 3 – Prospetto sud e piazzale

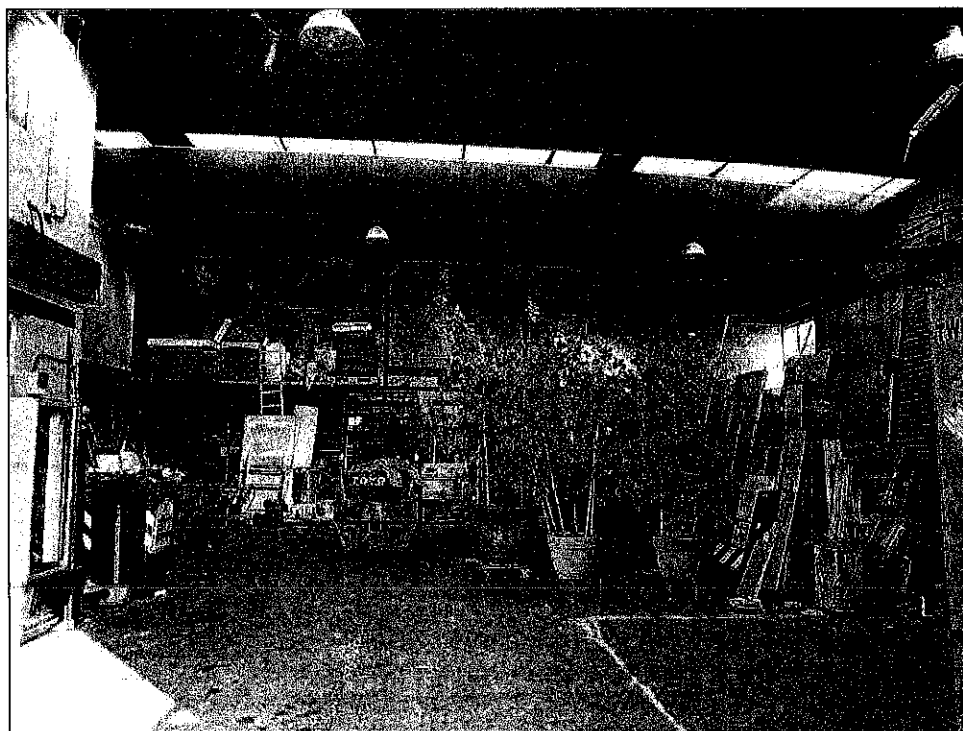


Foto n° 4 – Interno del deposito (piano terra)

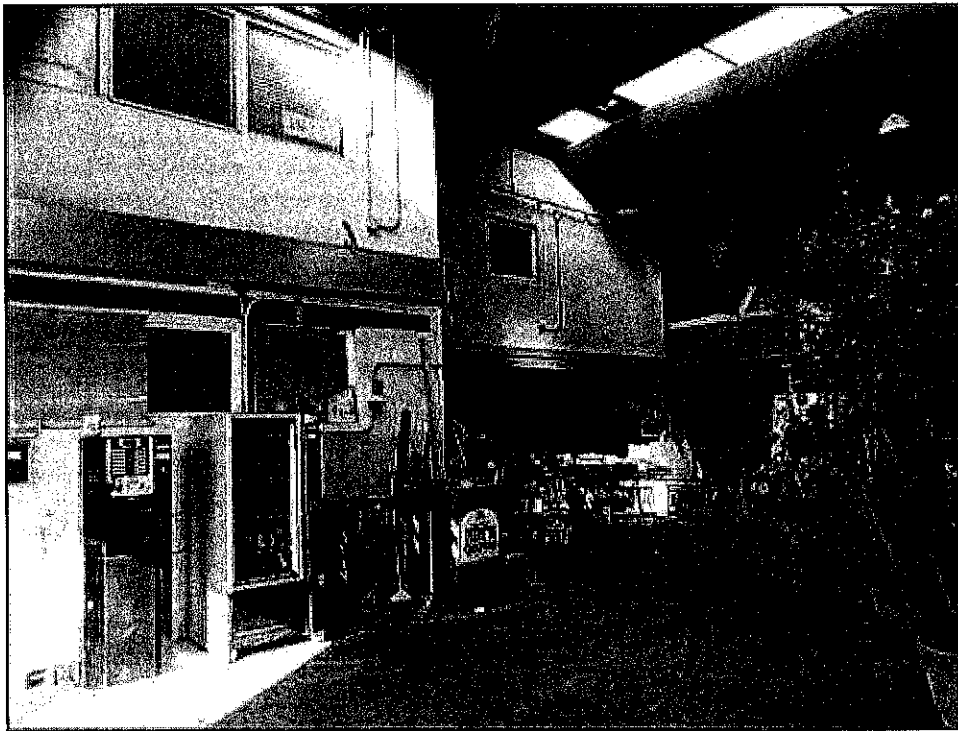


Foto n° 5 – Interno del deposito (piano terra)

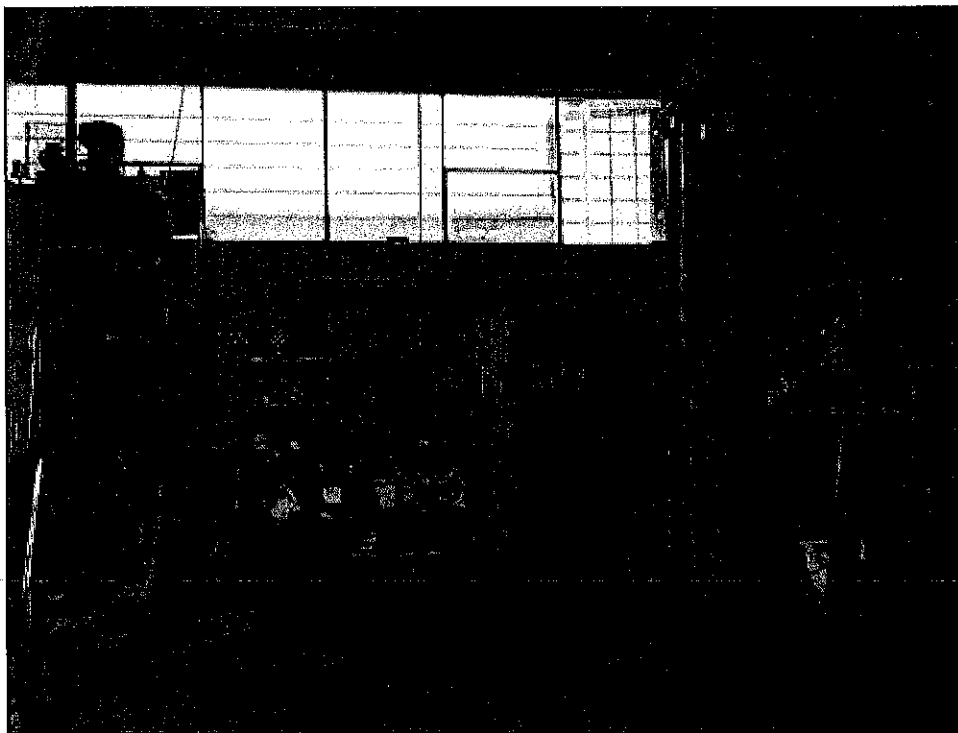


Foto n° 6 – Interno del deposito (piano terra)



Foto n° 7 – Interno del deposito (piano terra)

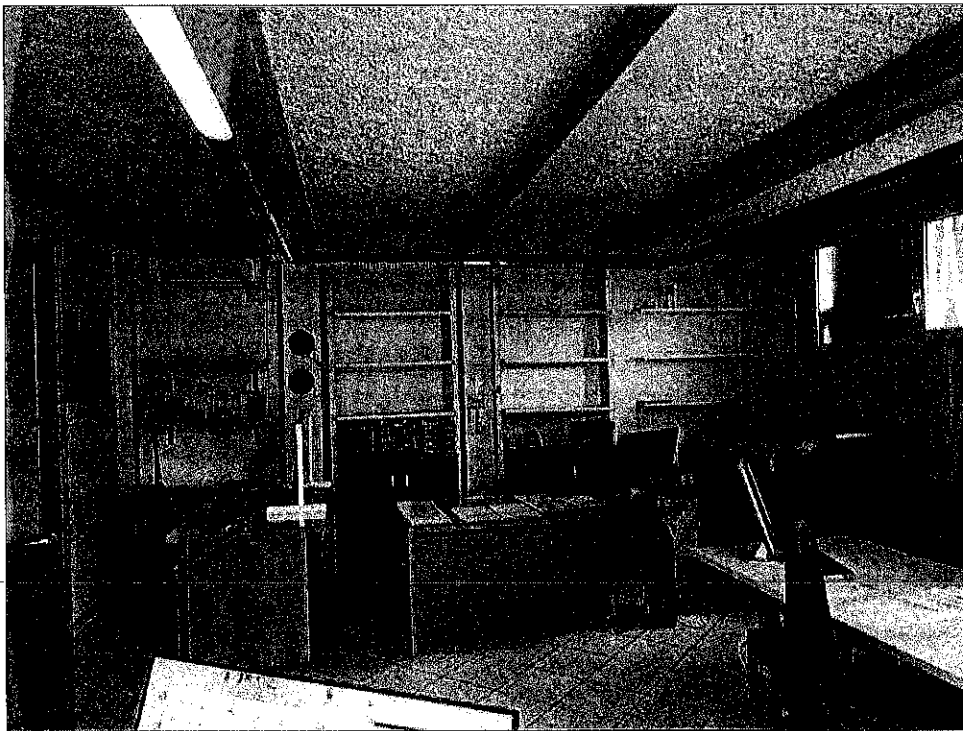


Foto n° 8 – Ufficio (piano terra)



Foto n° 9 – Ufficio (piano terra)

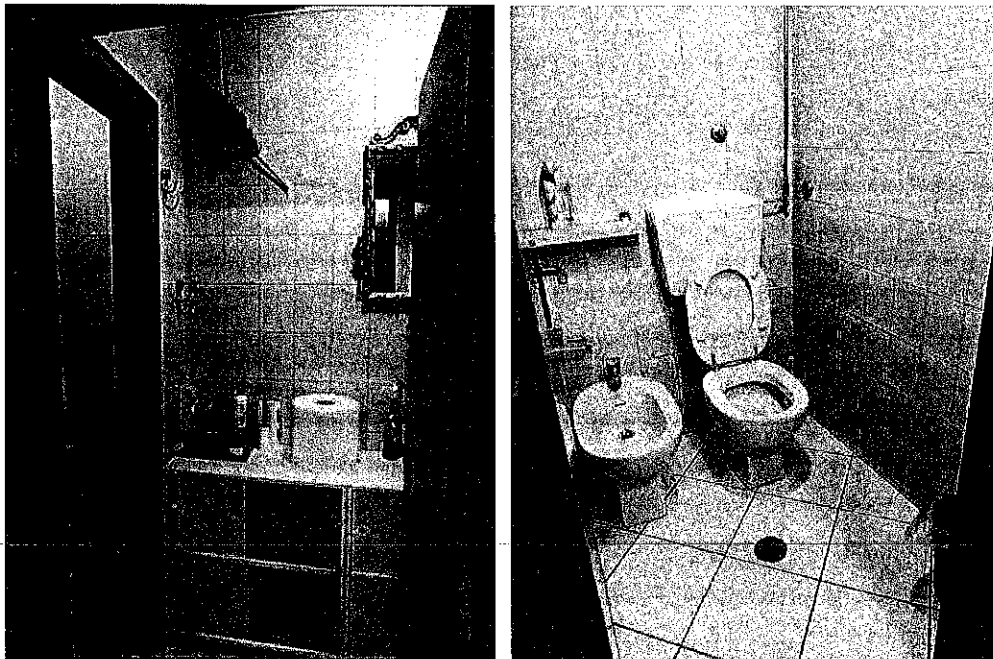


Foto n° 10 e 11 – Servizio igienico (piano terra)

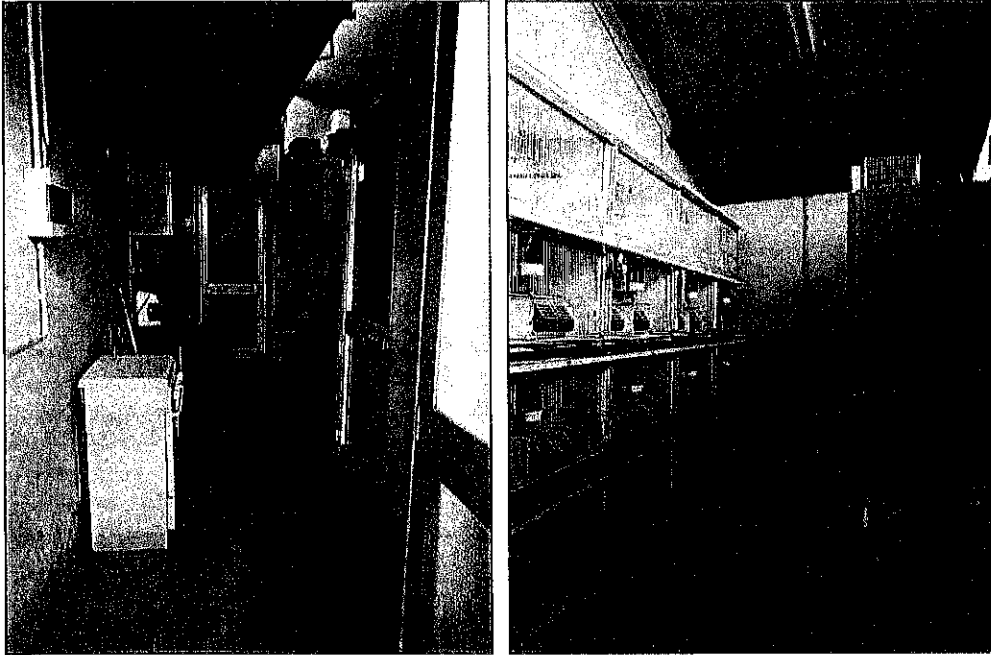


Foto n° 12 e 13 – Disimpegno e locale deposito (piano terra)

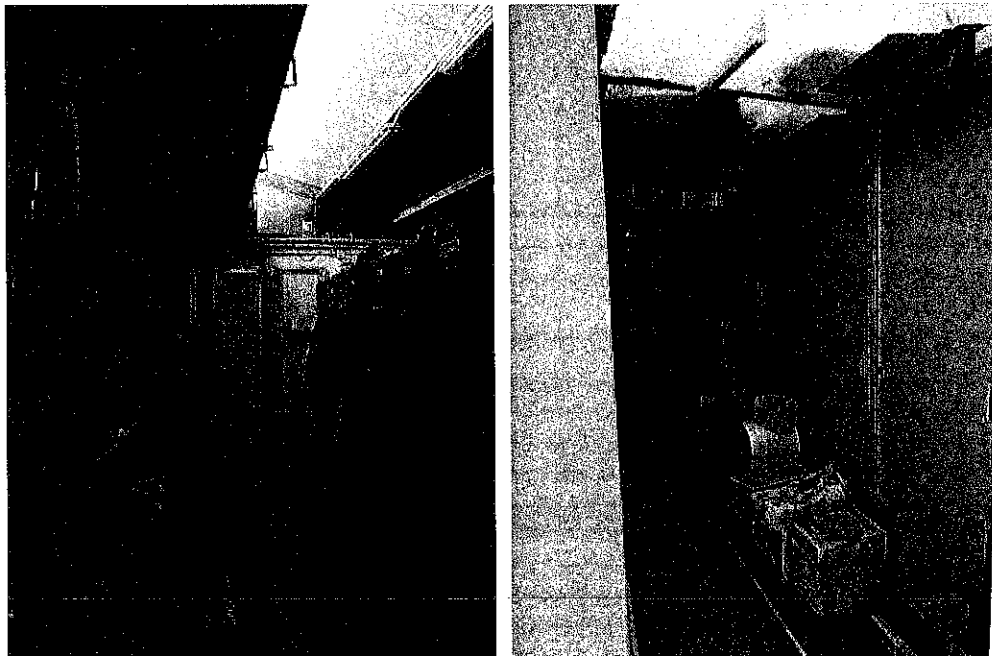


Foto n° 14 e 15 – Zona spogliatoi e servizi (piano terra)



Foto n° 16 – Zona spogliatoi e servizi (piano terra)

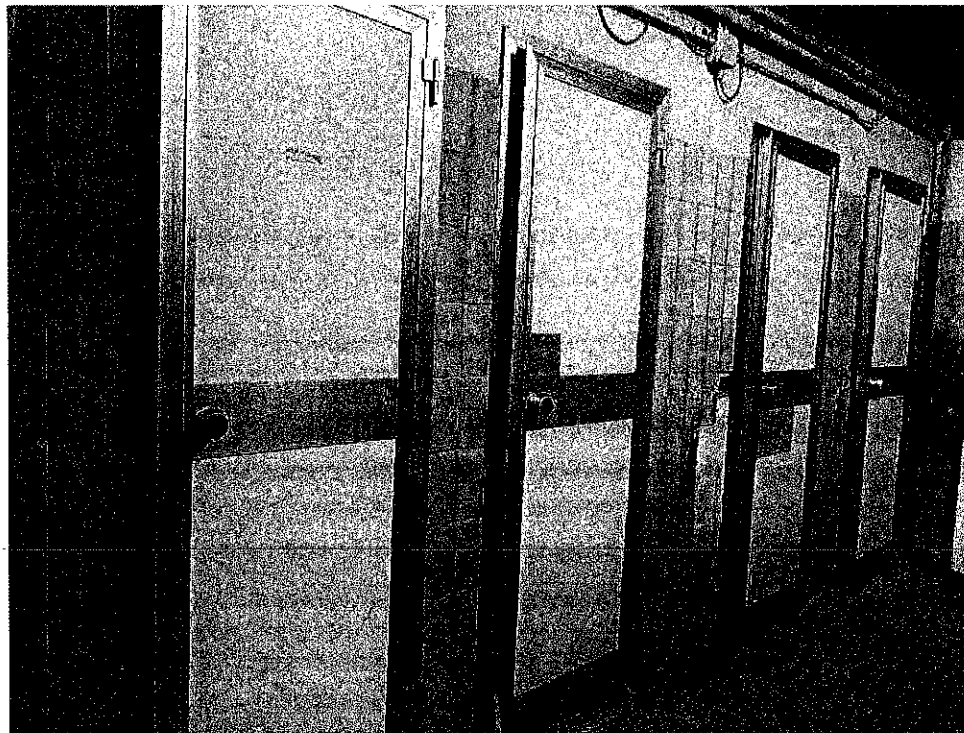


Foto n° 17 – Zona spogliatoi e servizi (piano terra)

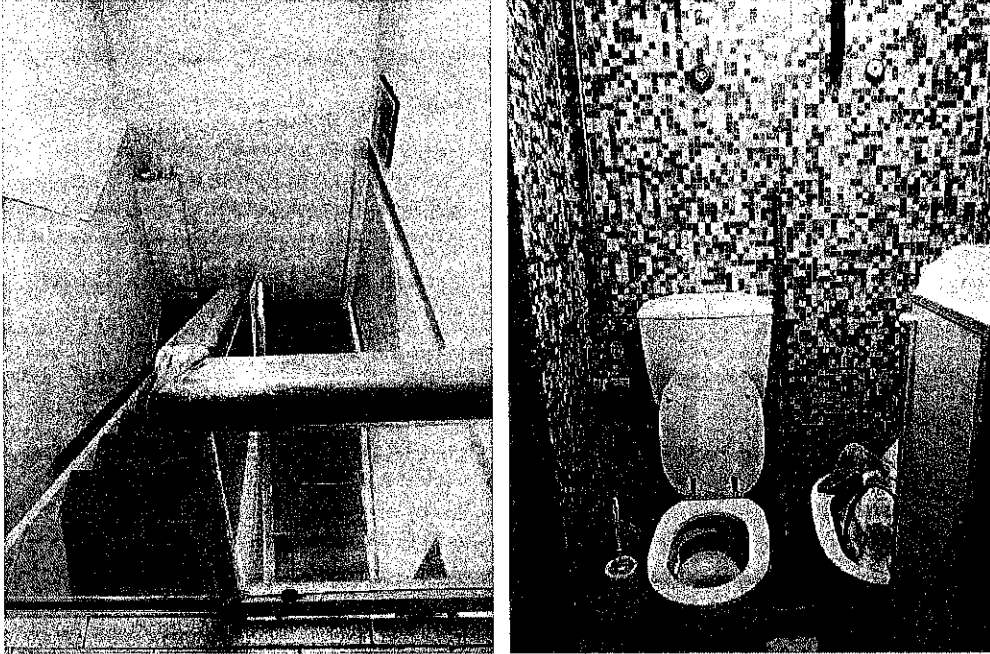


Foto n° 18 e 19 - Vano scala e servizio igienico (piano primo)

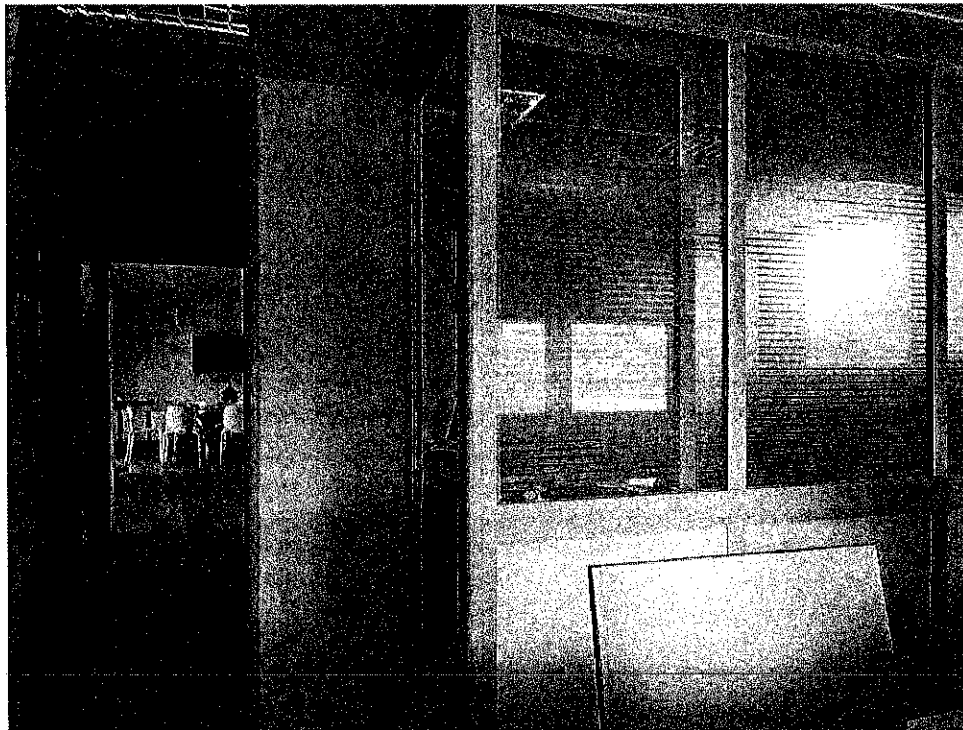


Foto n° 20 - Uffici (piano primo)





Foto n° 21 – Uffici (piano primo)

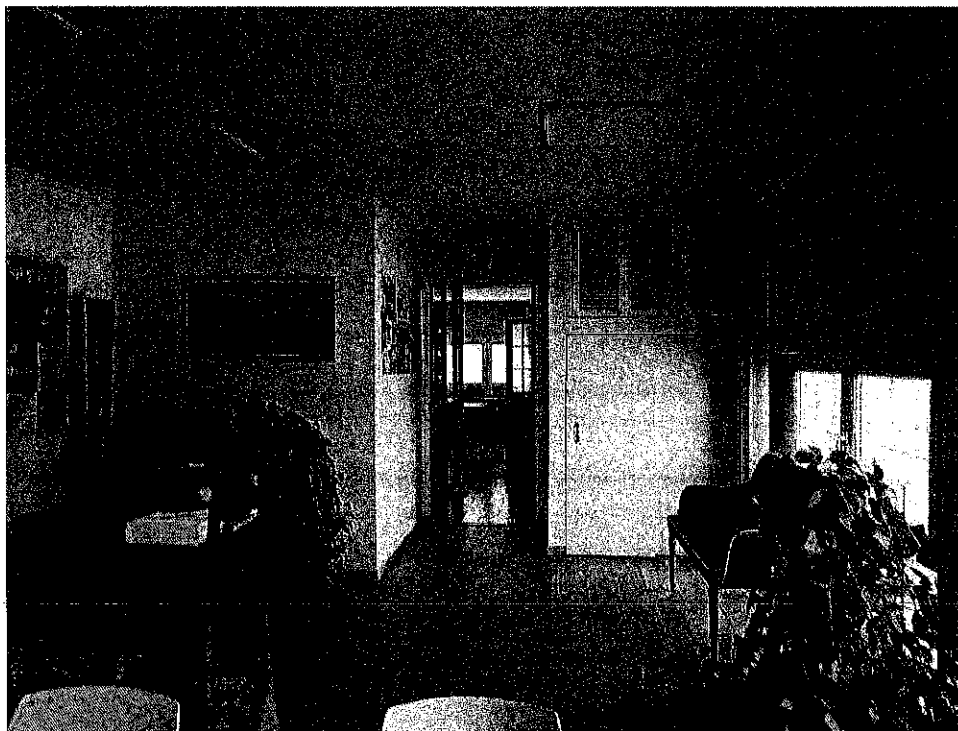


Foto n° 22 – Sala riunioni (piano primo)



Foto n° 23 – Sala riunioni (piano primo)

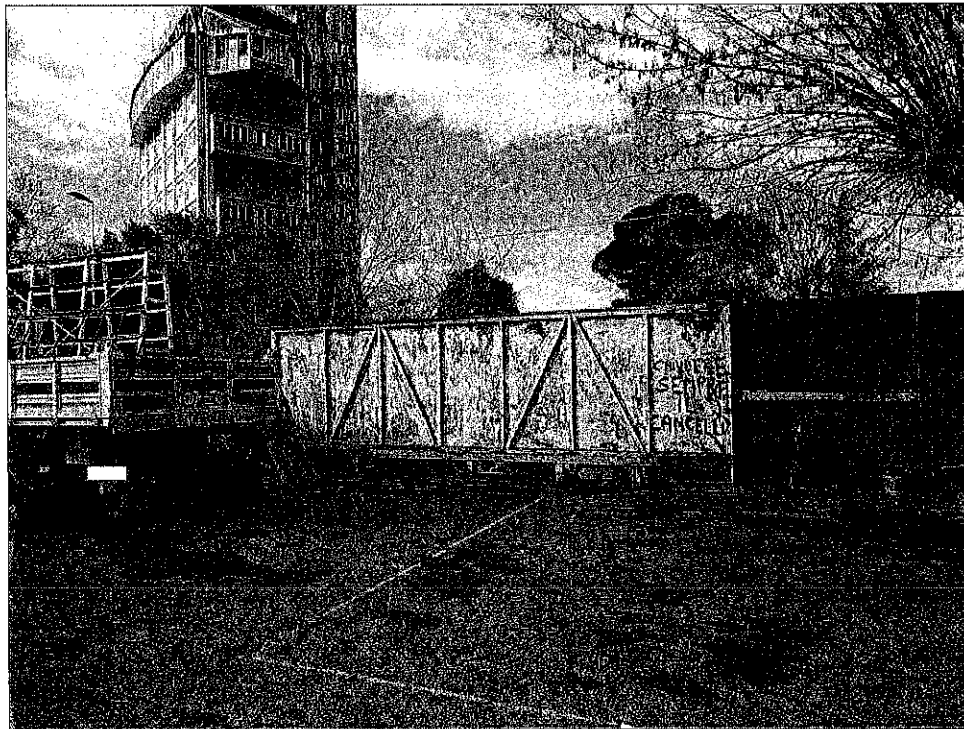


Foto n° 24 – Piazzale esterno

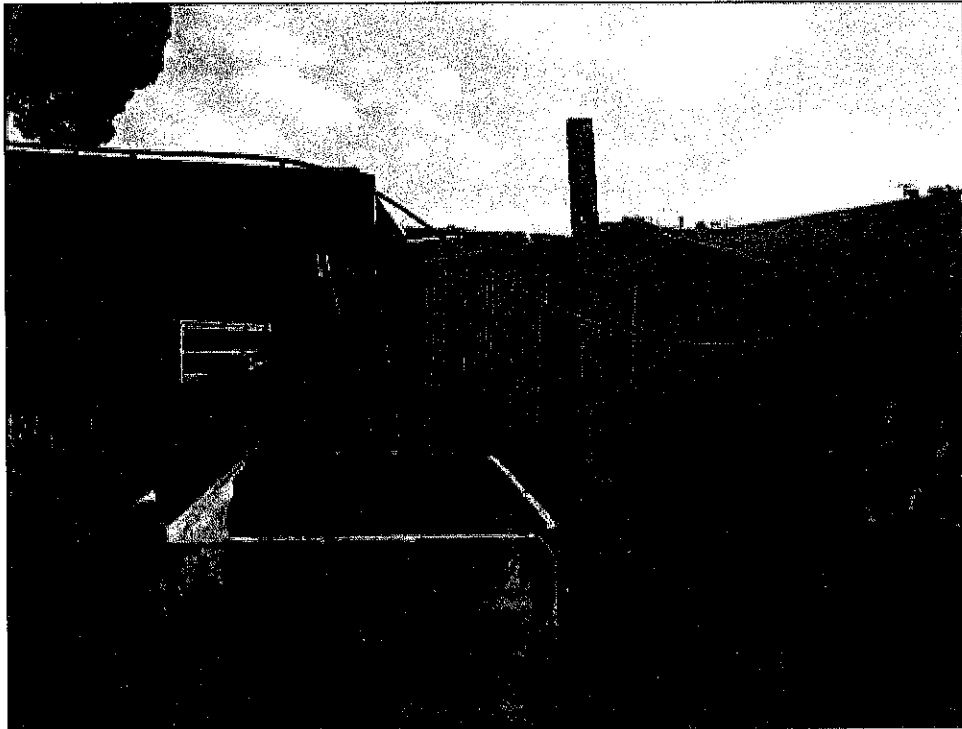


Foto n° 25 – Manufatti nel piazzale

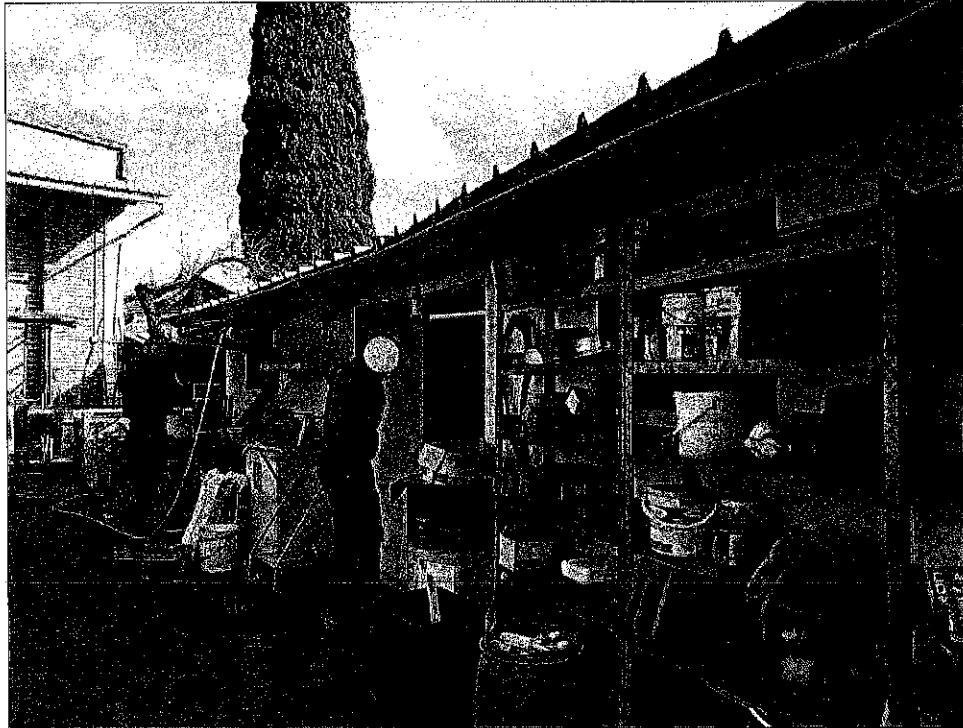


Foto n° 26 – Deposito nel piazzale



Foto n° 27 – Interno del deposito nel piazzale



Foto n° 28 – Interno del deposito nel piazzale