

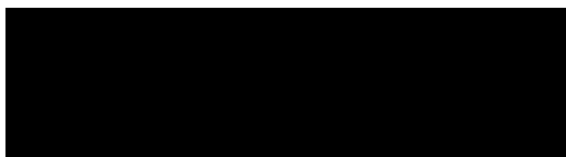
“ALLEGATO N. 2”

TRIBUNALE DI BRINDISI

RILIEVO FOTOGRAFICO

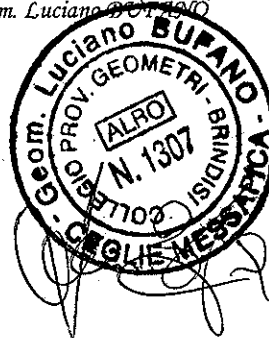
PROCEDURA ESECUTIVA N. 234/2018 R.G.Es

- G.E. : Dott.ssa Paola LIACI
- C.T.U. : Geom. Luciano BUFANO;
- Proc. Esec. : N. 234/2018 R.G. Es.;



Ceglie Messapica li 25 Luglio 2019

Il Consulente
Tecnico D'Ufficio
Geom. Luciano BUFANO



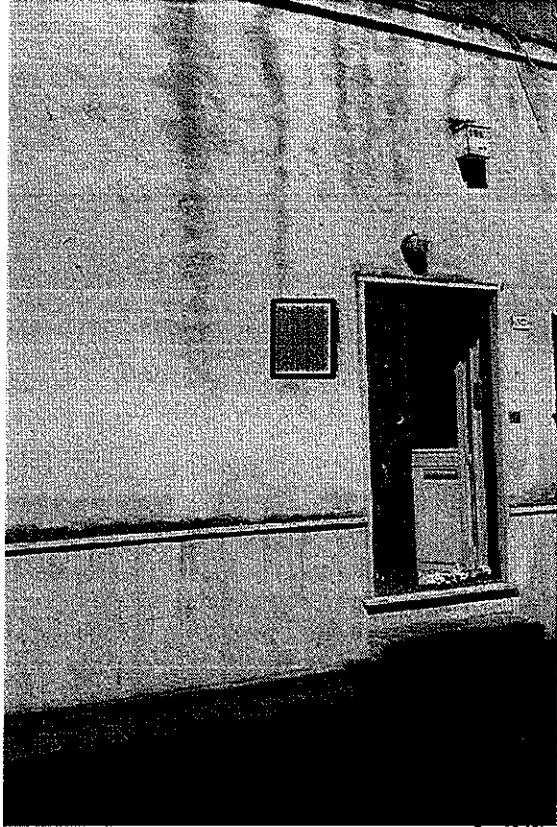


Foto n. 1 – LOTTO A



Foto n. 2 – LOTTO A



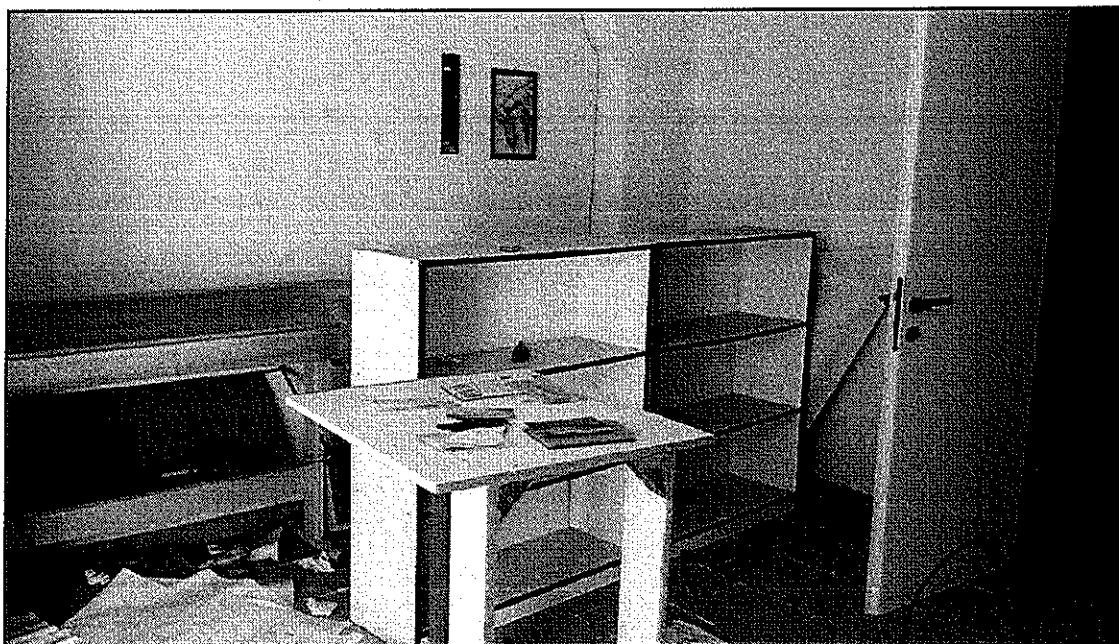


Foto n. 3 – LOTTO A

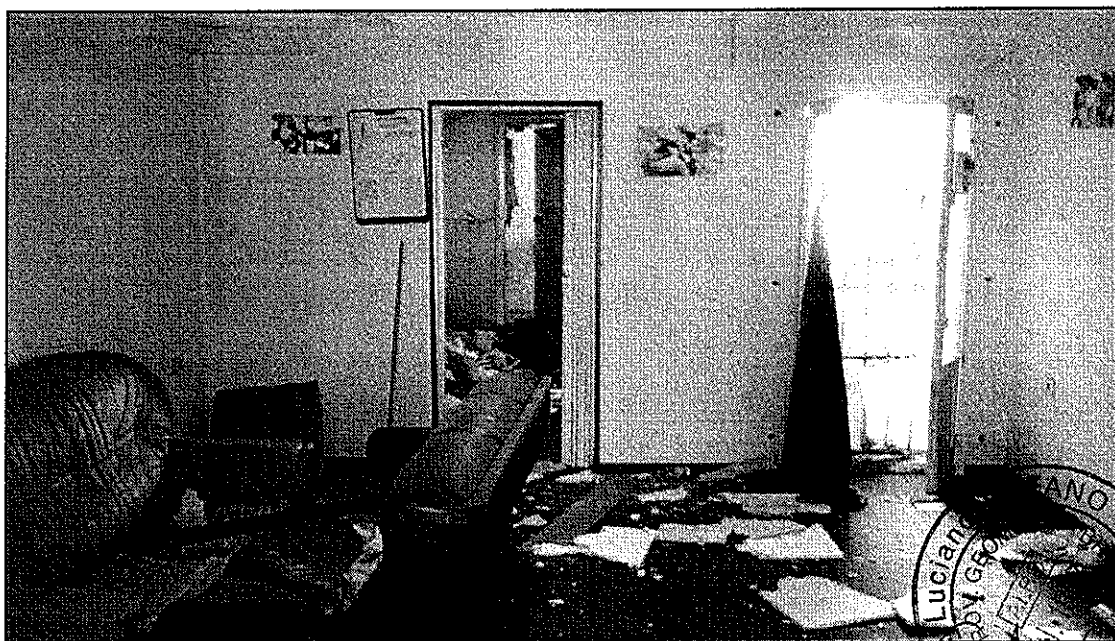
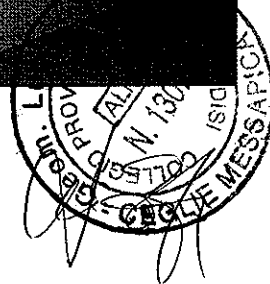


Foto n. 4 – LOTTO A





Foto n. 5 – LOTTO A

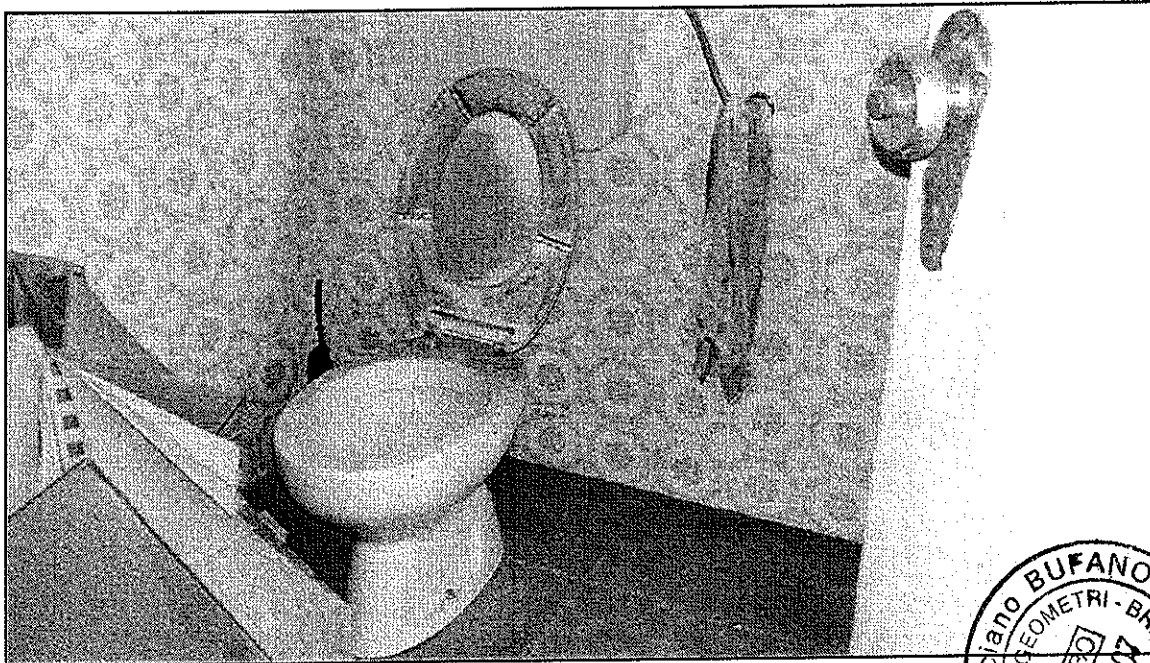
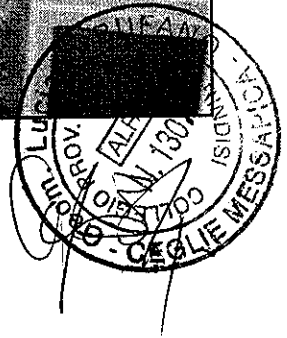


Foto n. 6 – LOTTO A

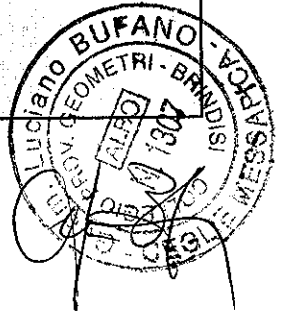




Foto n. 7 – LOTTO A

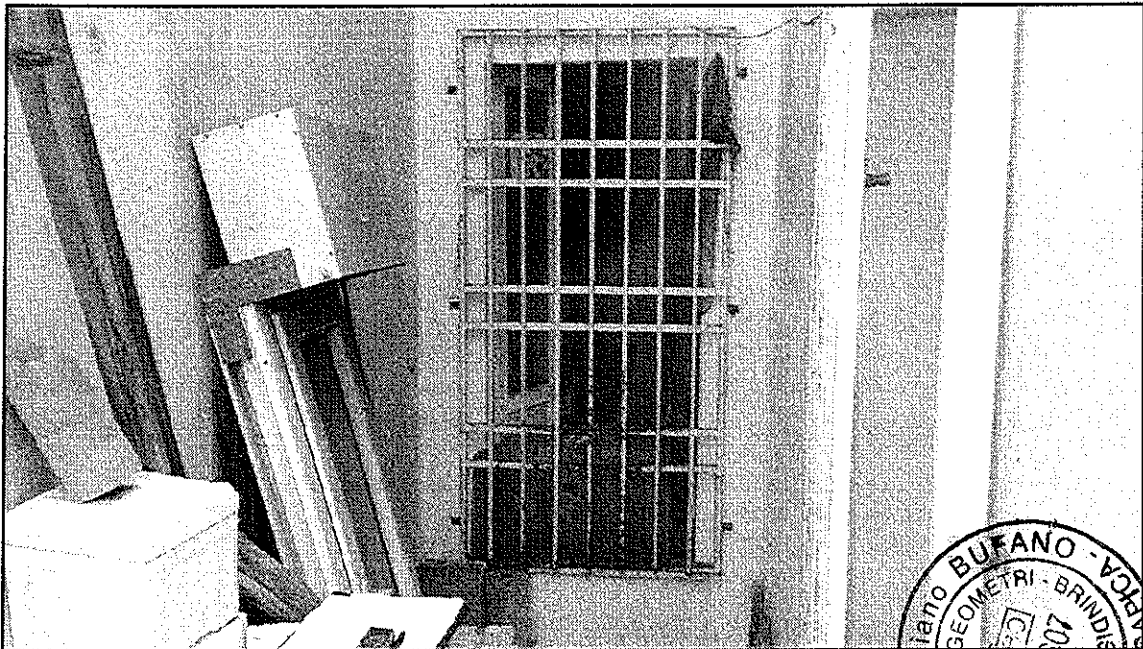
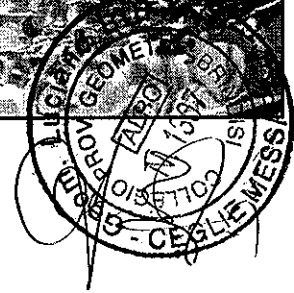
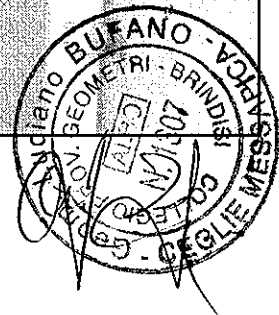


Foto n. 8 – LOTTO A



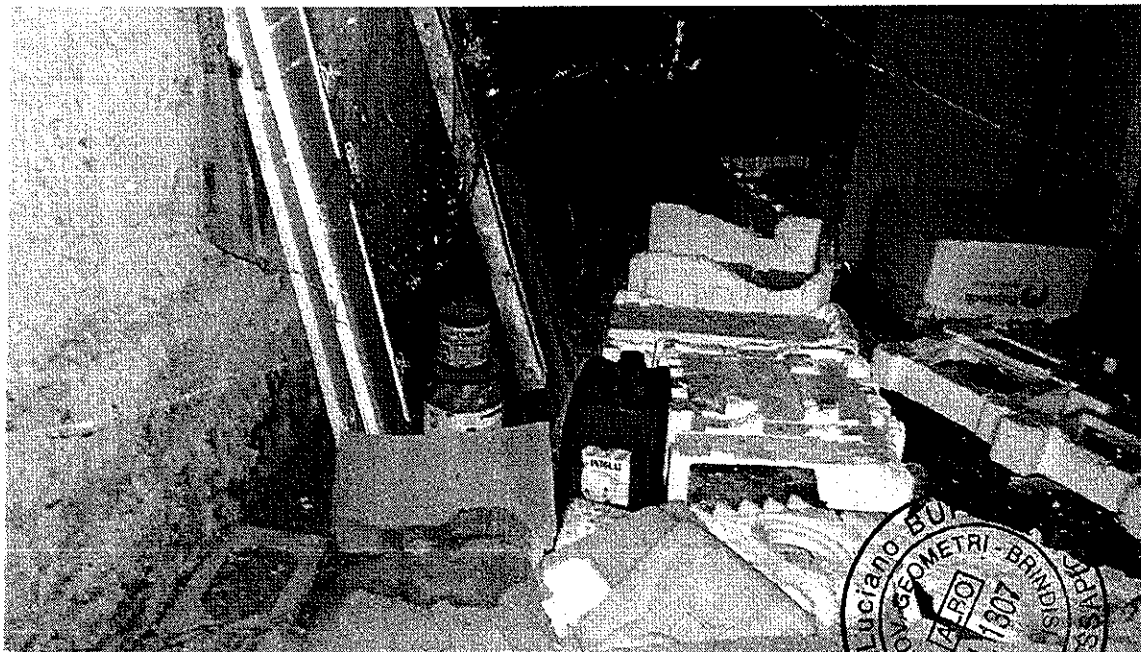


Foto n. 9 – LOTTO A

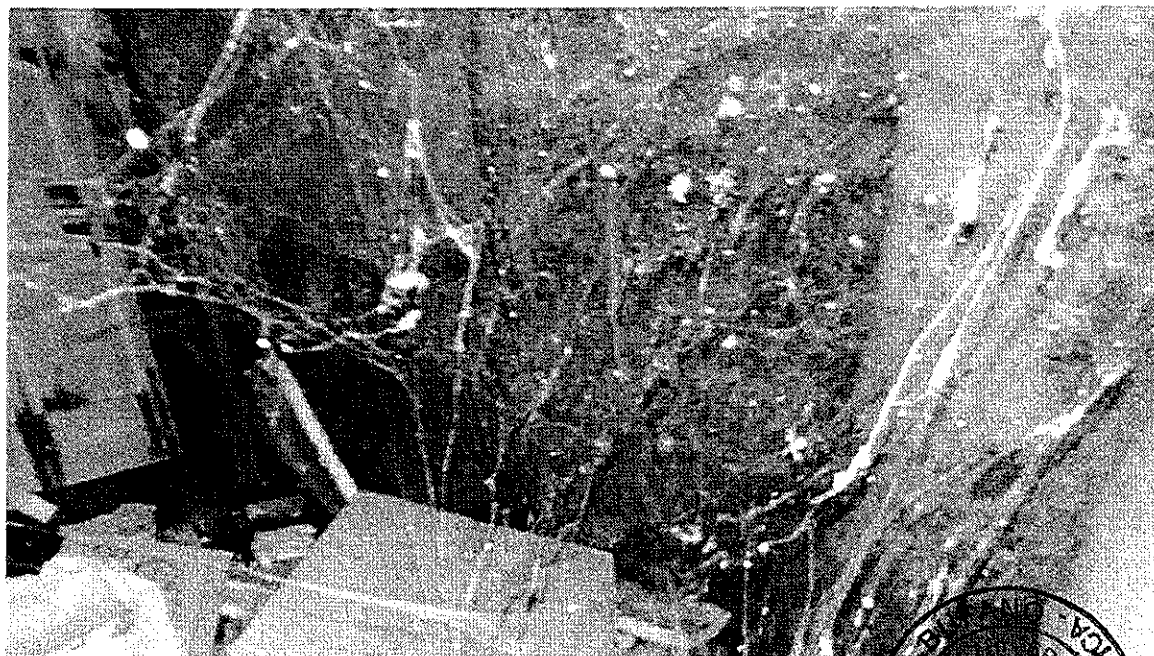
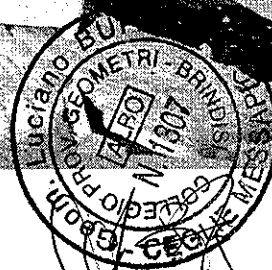


Foto n. 10 – LOTTO A



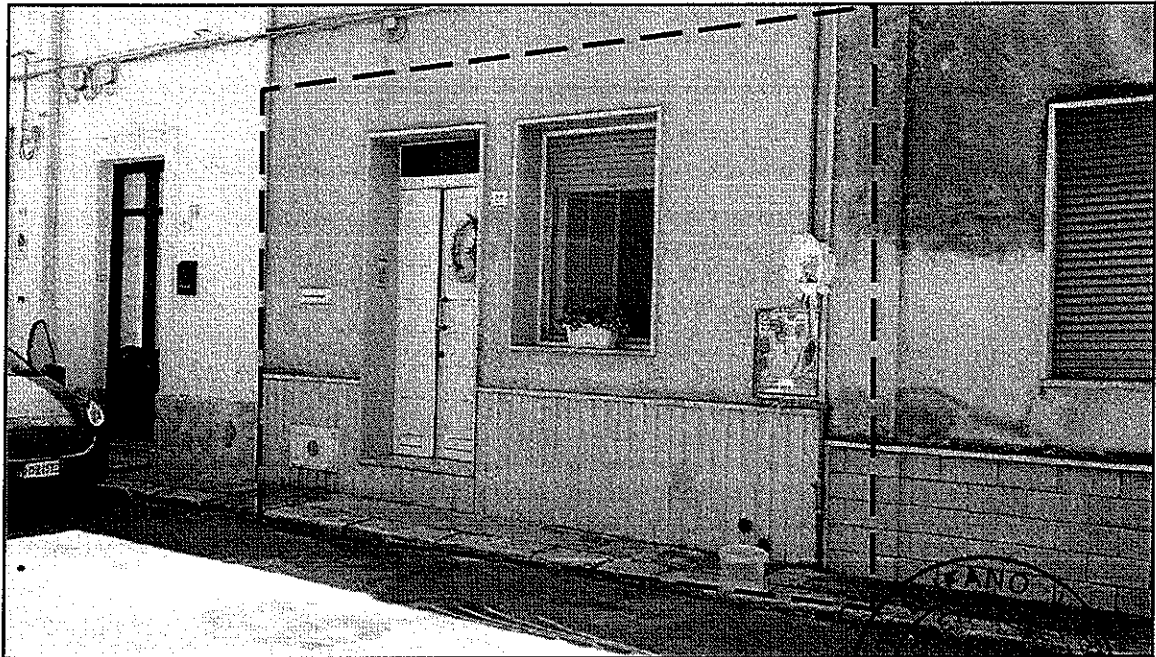


Foto n. 11 – LOTTO B

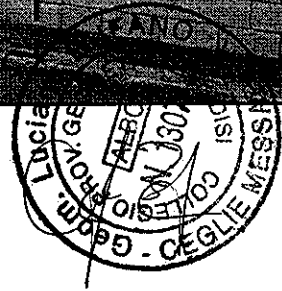


Foto n. 12 – LOTTO B





Foto n. 13 – LOTTO B



Foto n. 14 – LOTTO B

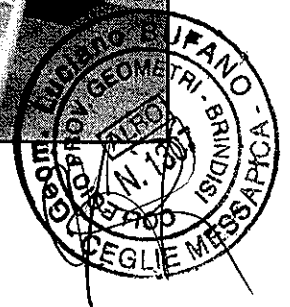




Foto n. 15 – LOTTO B

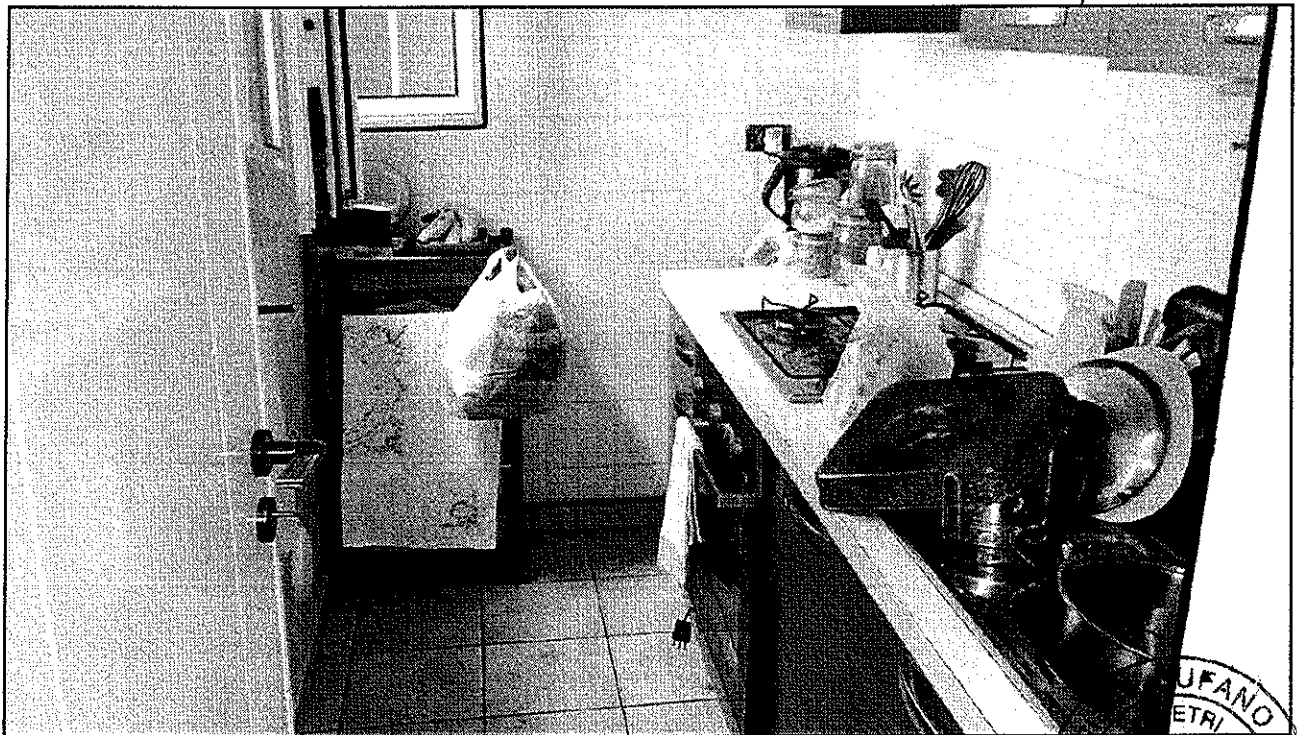
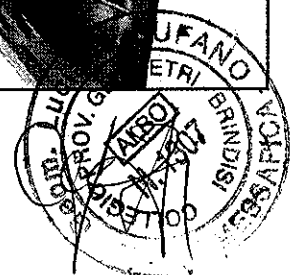


Foto n. 16 – LOTTO B



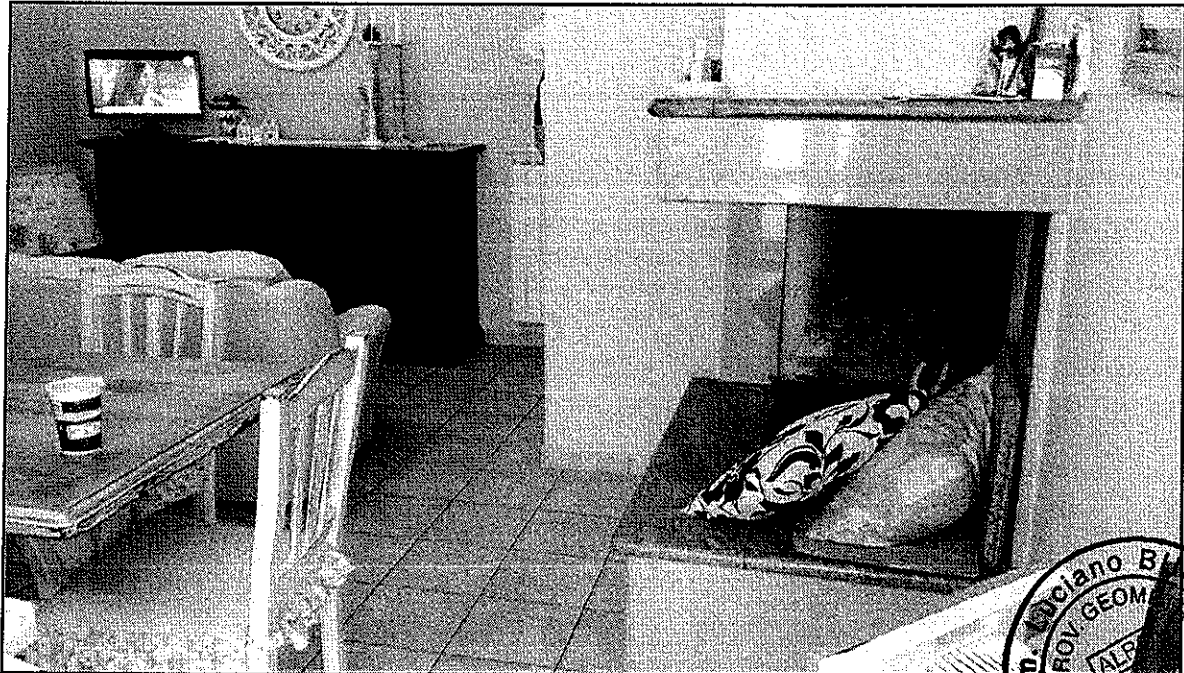


Foto n. 17 – LOTTO B

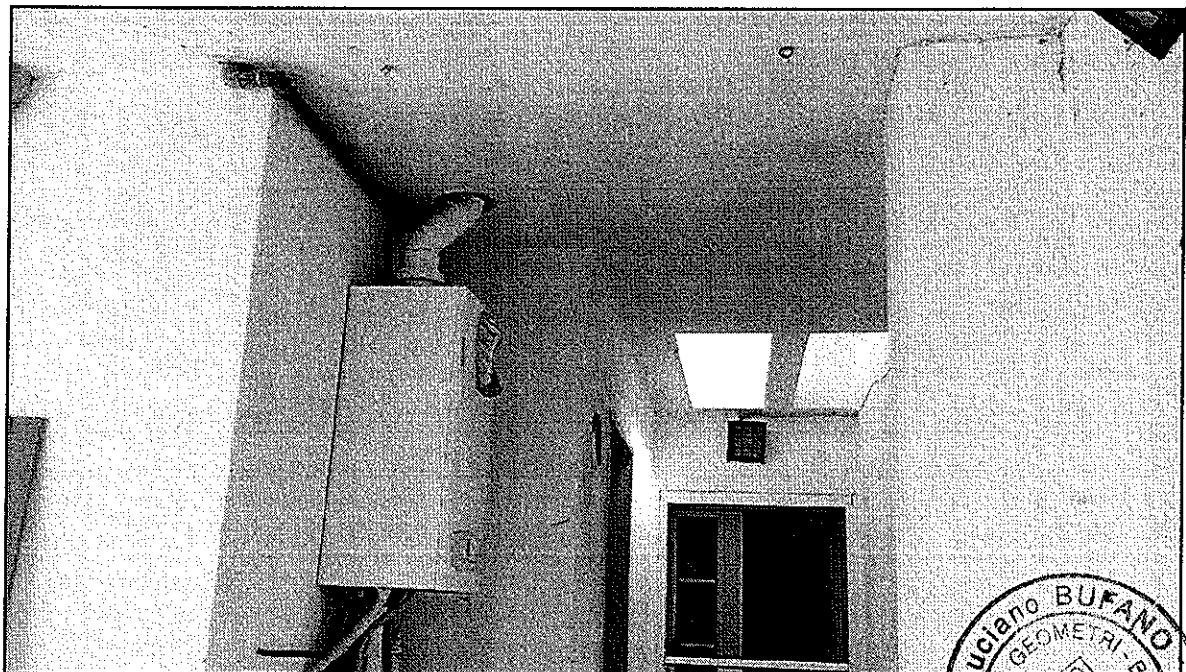
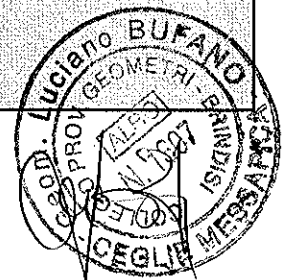


Foto n. 18 – LOTTO B



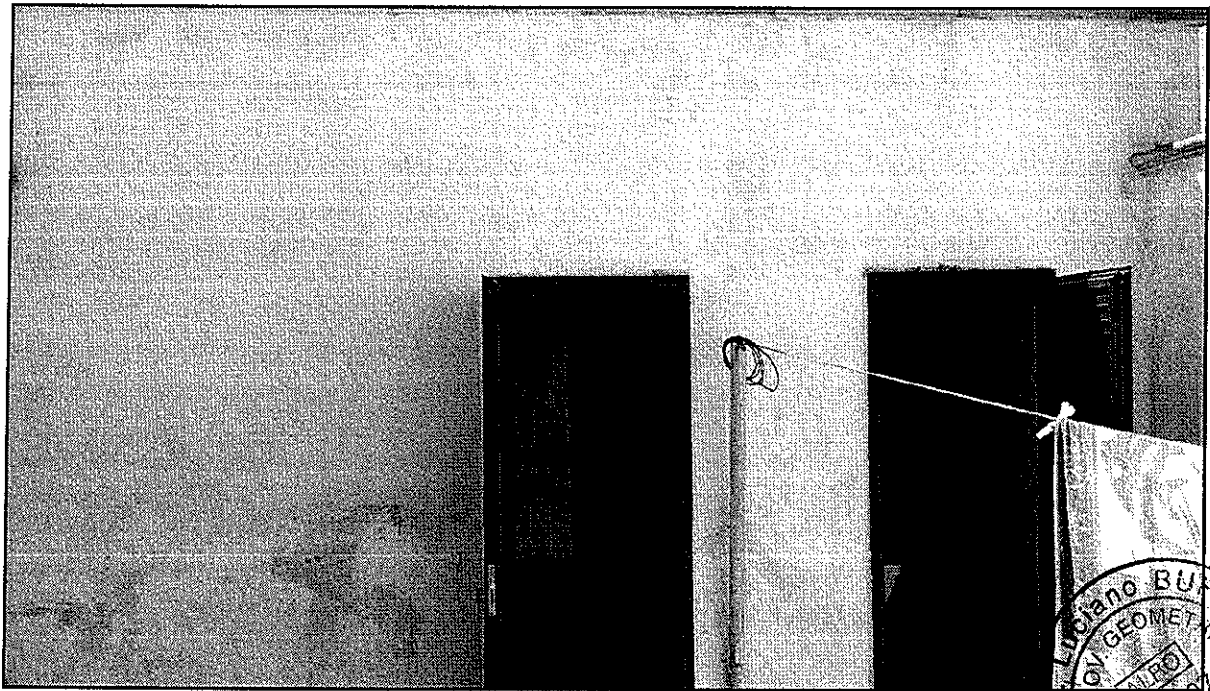


Foto n. 19- LOTTO B

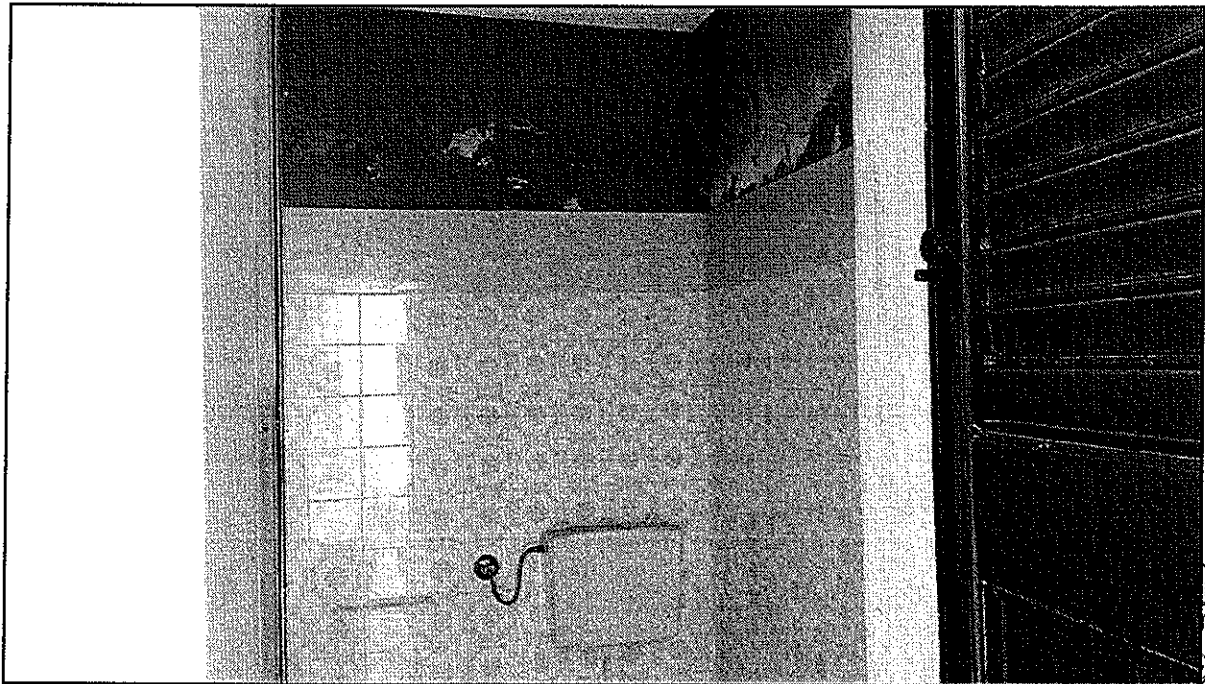
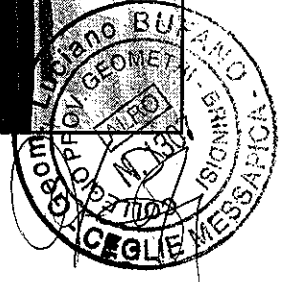
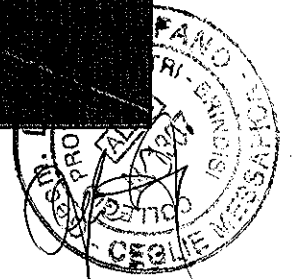


Foto n. 20- LOTTO B



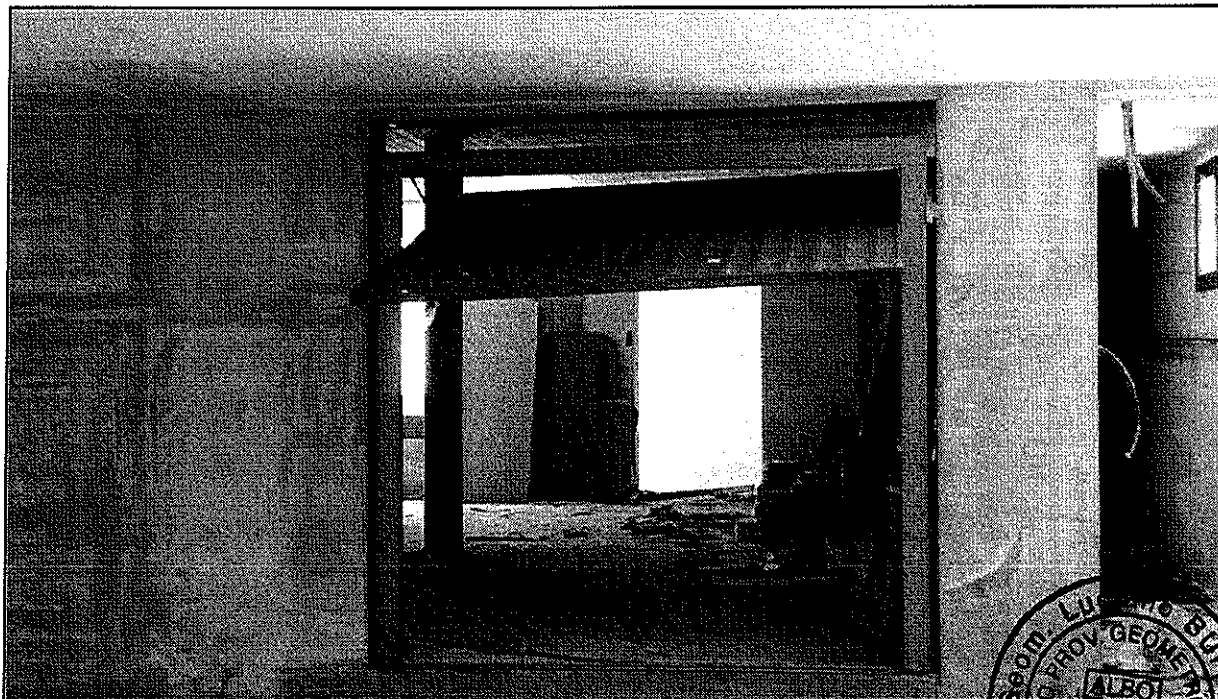


Foto n. 21- LOTTO C

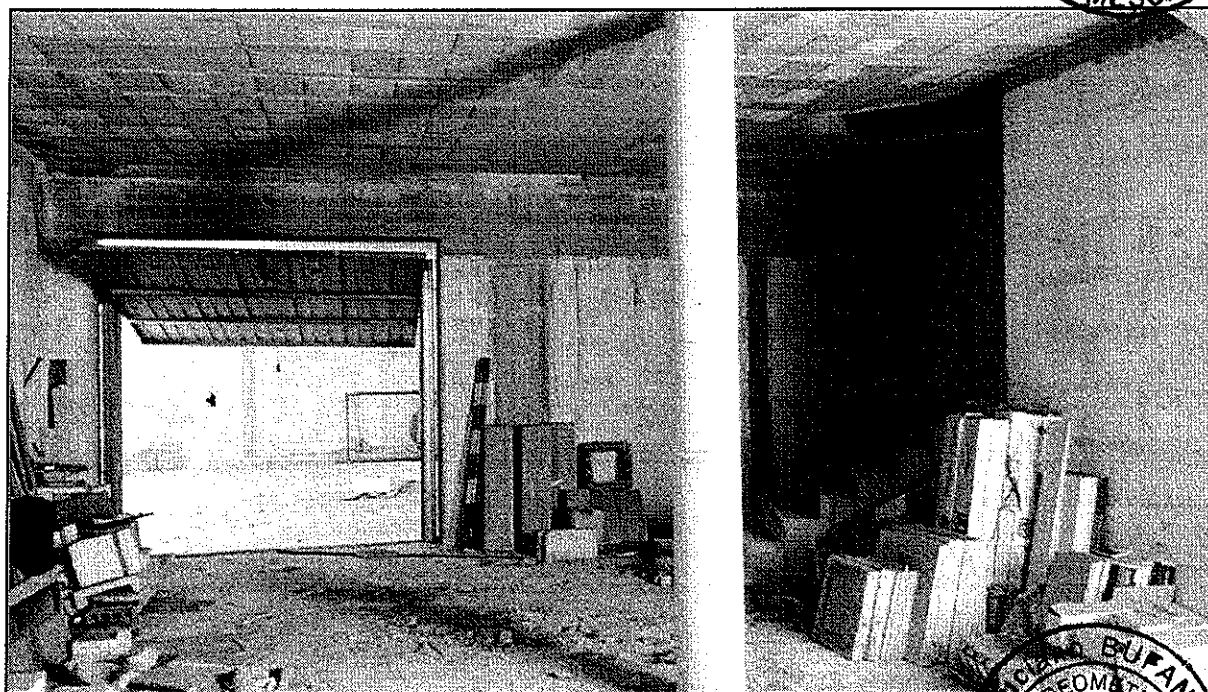


Foto n. 22- LOTTO C

