



Foto n° 1 – Prospetto principale fabbricato in Gravitelli



Foto n° 2 – Portone d'ingresso del piano sottoterra



Foto n° 3 – Area d'accesso ai box

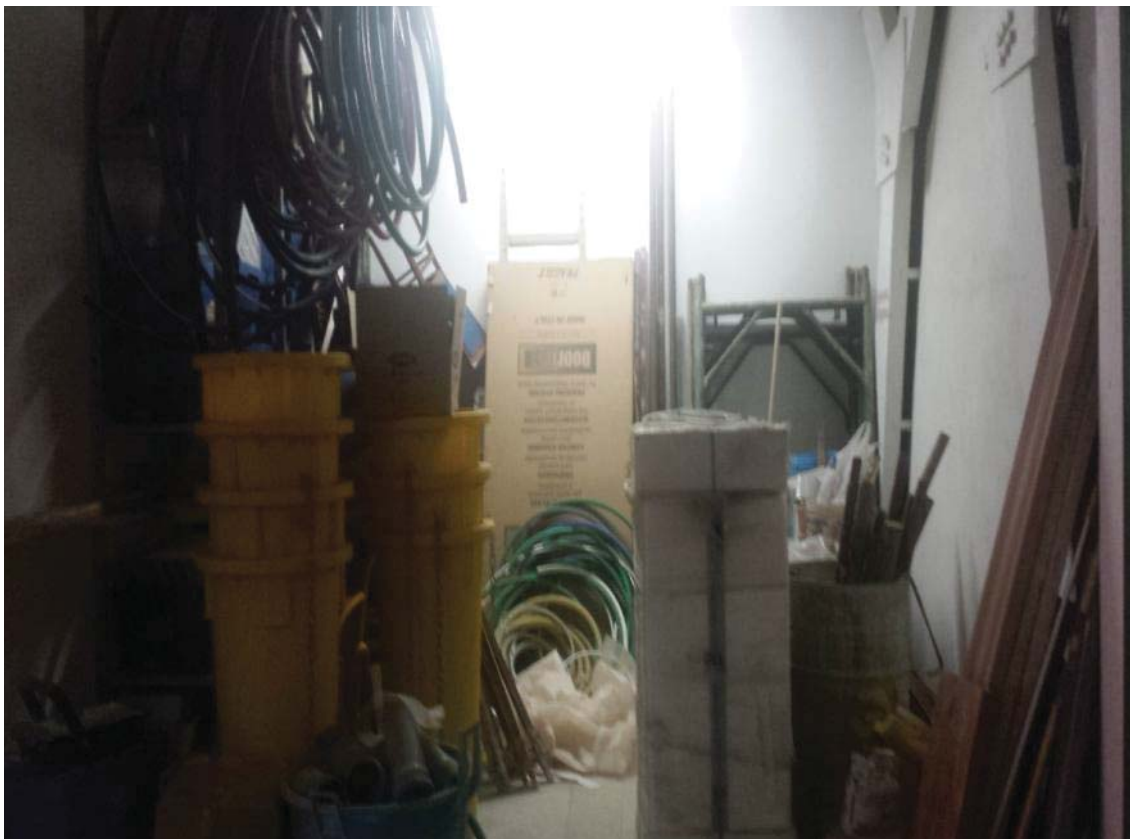


Foto n° 4 – Box sub 31



Foto n° 5 – Box sub 35



Foto n° 6 – Box sub 35



Foto n° 7 – Box sub 35



Foto n° 8 – Box sub 35



Foto n° 9 – Accesso al fondo da S.P. 35



Foto n° 10 – Scale d'accesso all'unità immobiliare



Foto n° 11 – Ingresso abitazione



Foto n° 12 – Terrazzo



Foto n° 13 – Corridoio

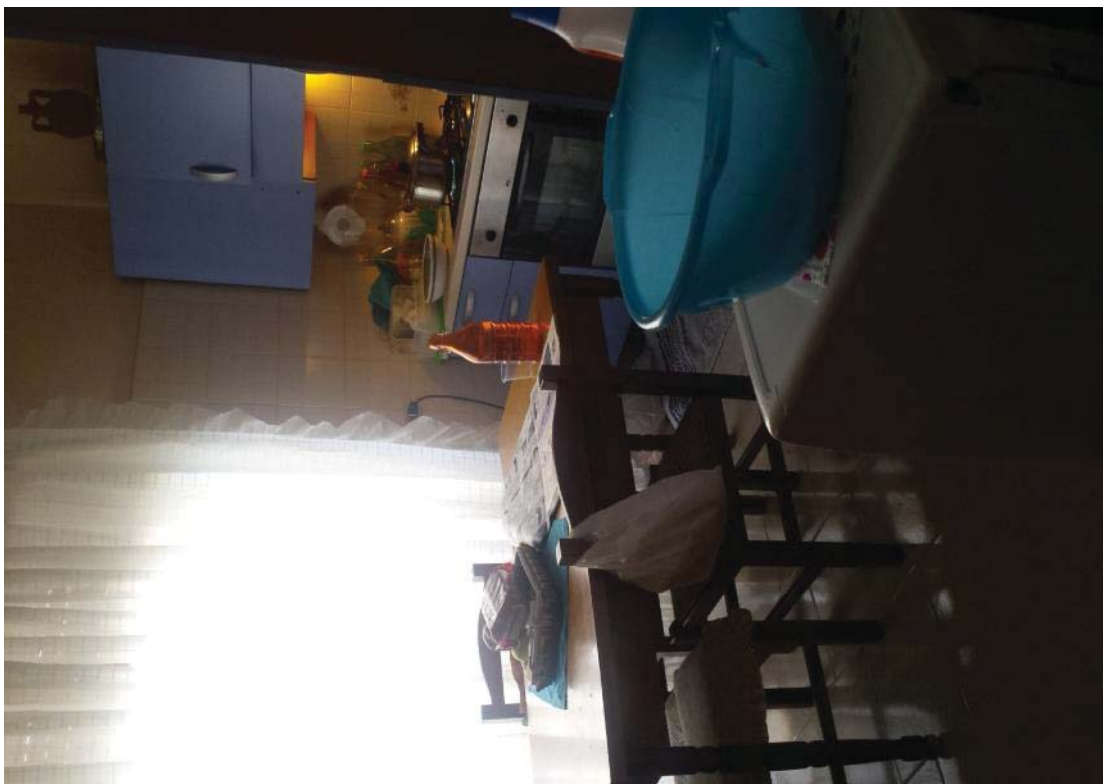


Foto n° 14 – Cucina

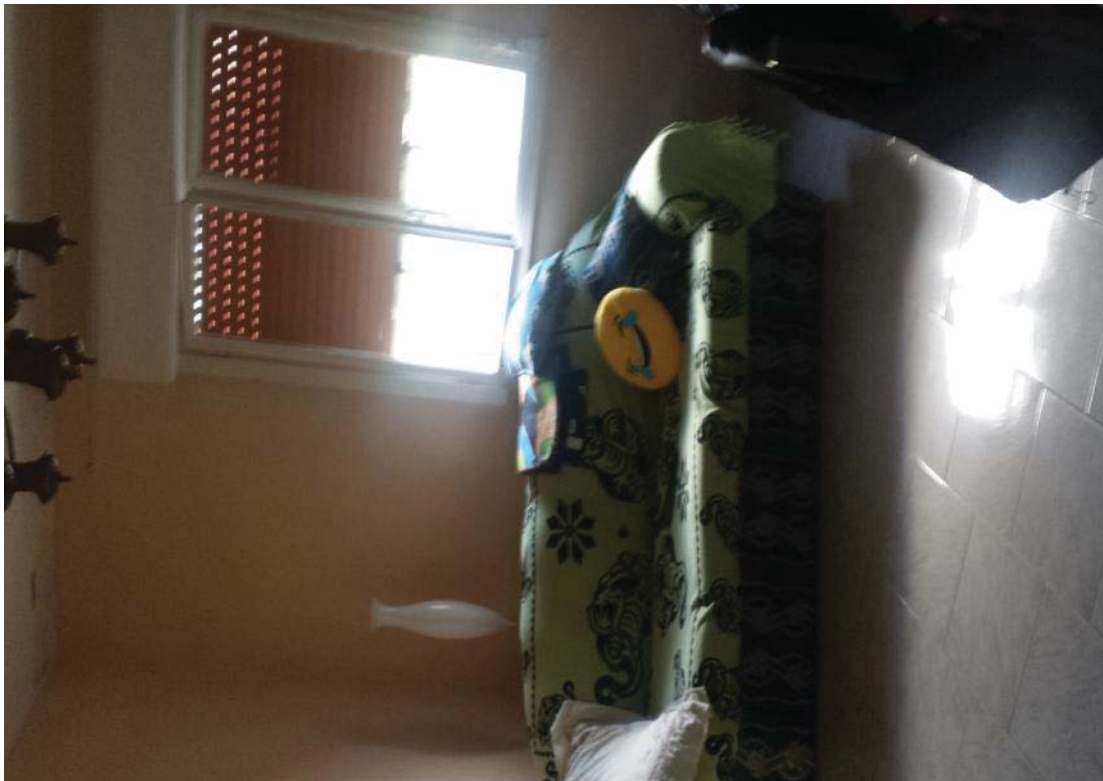


Foto n° 15 – Soggiorno

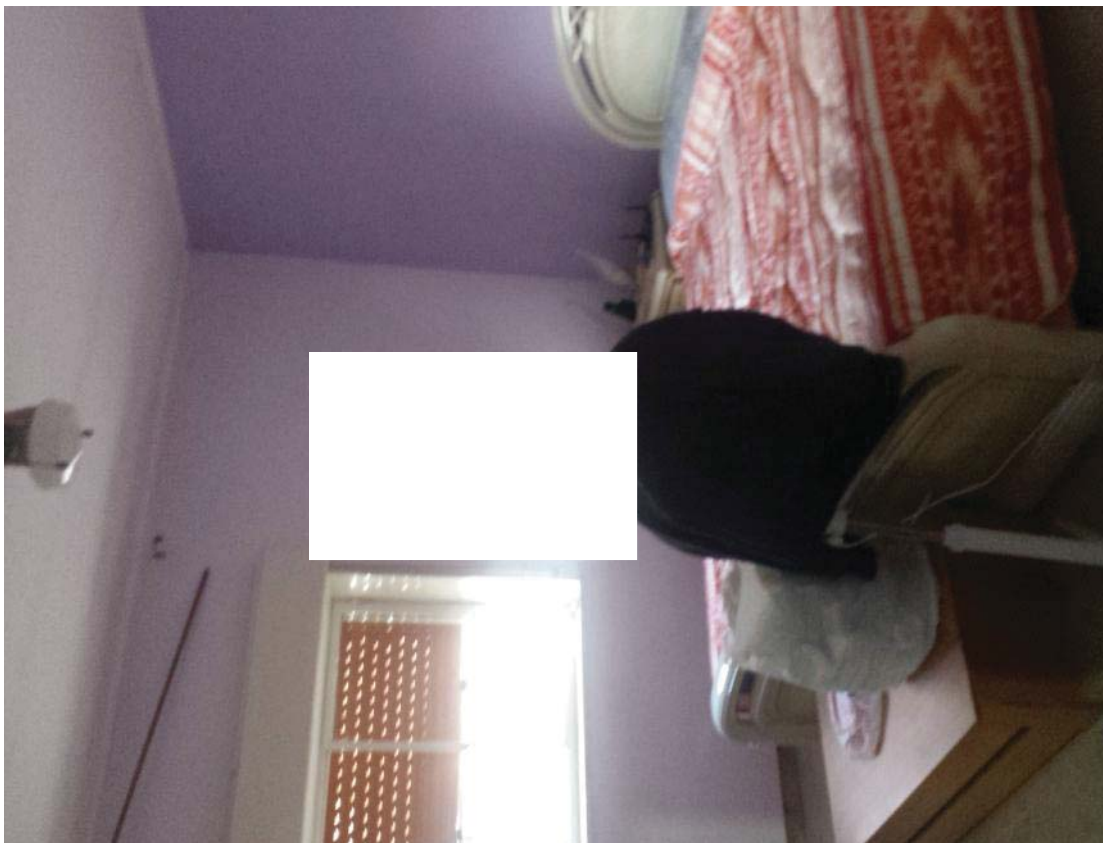


Foto n° 16 – Camera



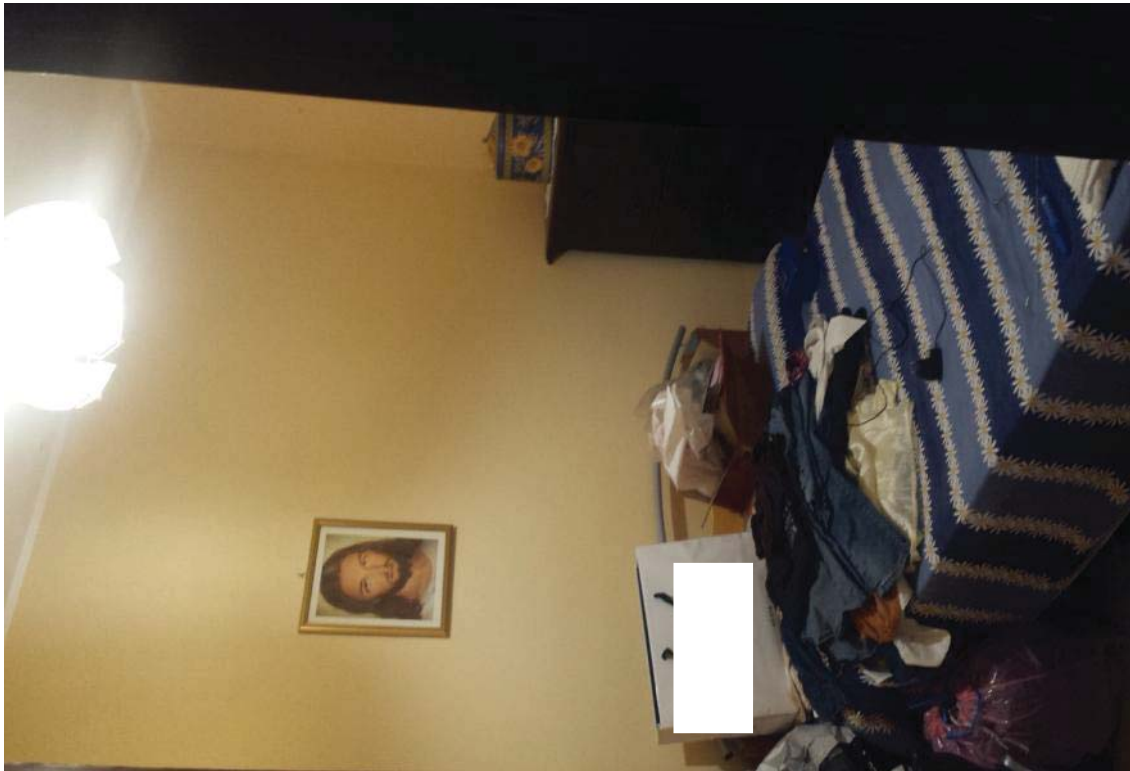


Foto n° 17 – Cameretta

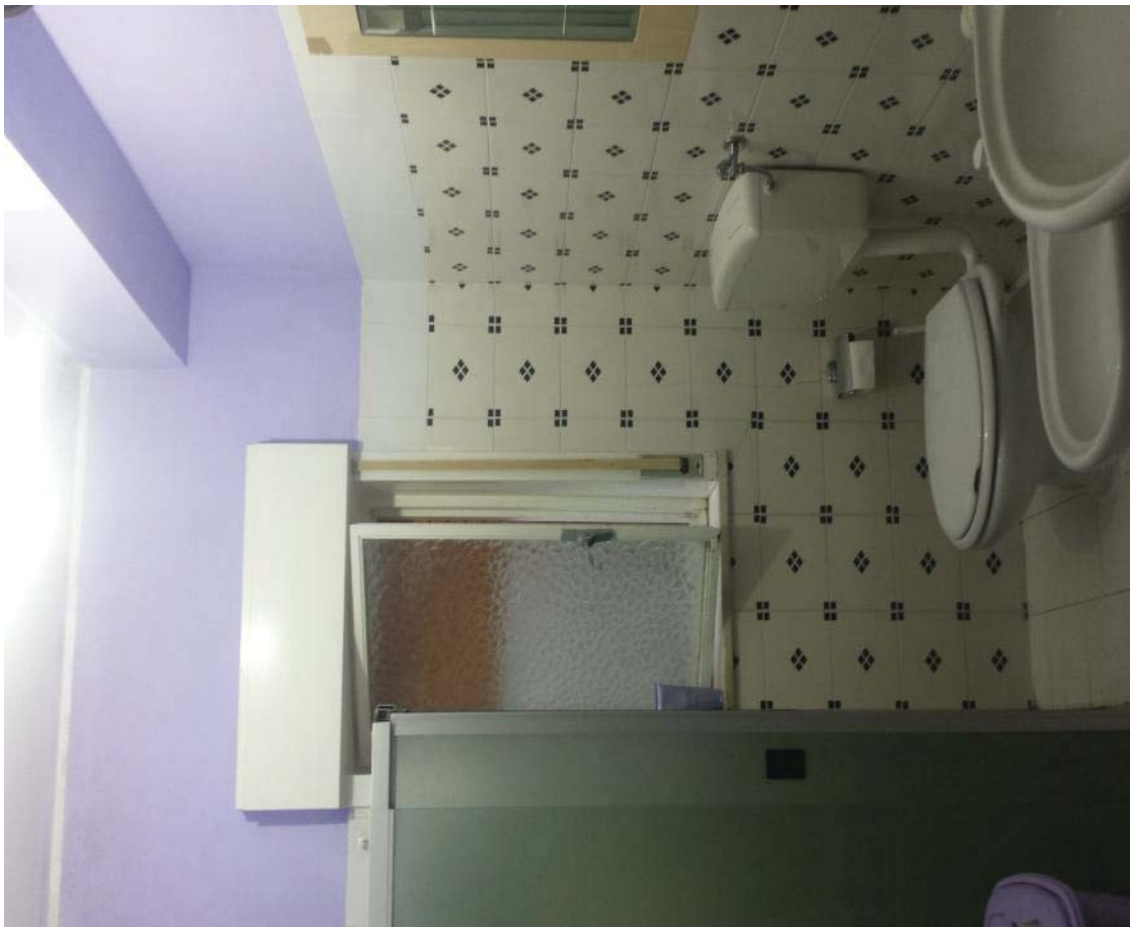


Foto n° 18 – Bagno