

RAPPORTO FOTOGRAFICO

N.C.E.U.: fg. 6 mapp. 838 sub. 2, fg. 6 mapp. 656 sub 4; N.C.T. Fg. 6 mapp. 853; fg. 6 mapp. 660.

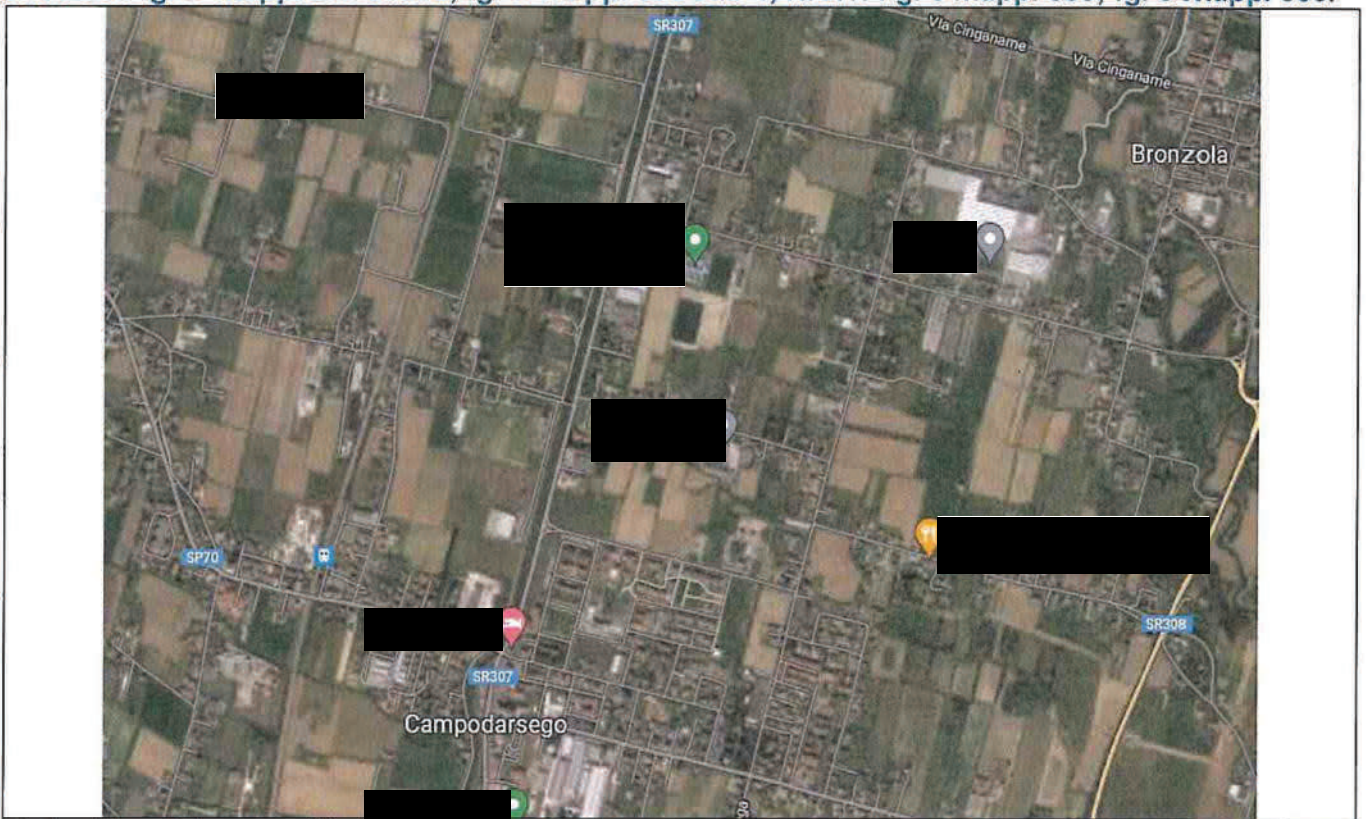


Foto n°1: Foto aerea di inquadramento generale



Foto n°2: Foto aerea di inquadramento di dettaglio



Foto n°3: Foto aerea di inquadramento di maggior dettaglio: mapp 660 e mapp. 853



Foto n°4: Foto aerea della villa mapp. 656 sub 4 e dell'annesso rustico mapp. 838



Foto n°5: Fronte nord



Foto n°6: Gazebo



Foto n°7: Fronte sud annesso rustico

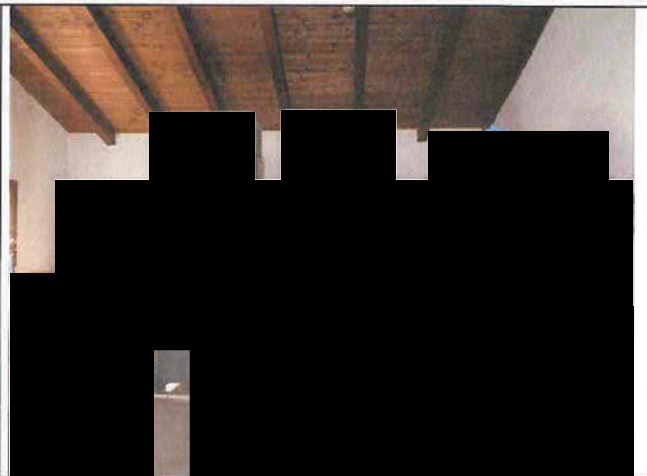


Foto n°8: Interno annesso rustico



Foto n°9: Fronte ovest



Foto n°10: percorso carrabile a nord



Foto n°11: percorso carrabile ad ovest



Foto n°12: facciata sud-ovest villa



Foto n°13: Facciata ovest con gazebo

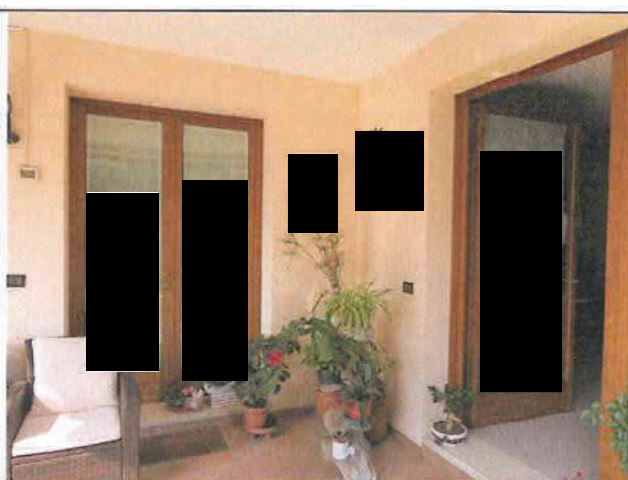


Foto n°14: portico di ingresso



Foto n°15: Soggiorno

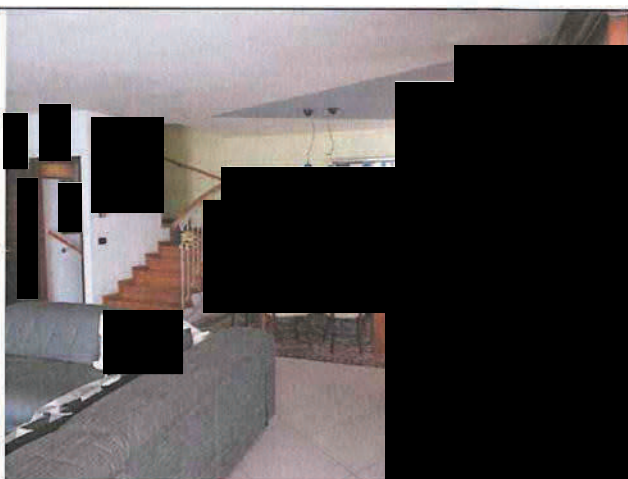


Foto n°16: altra vista soggiorno con scala per P.1°

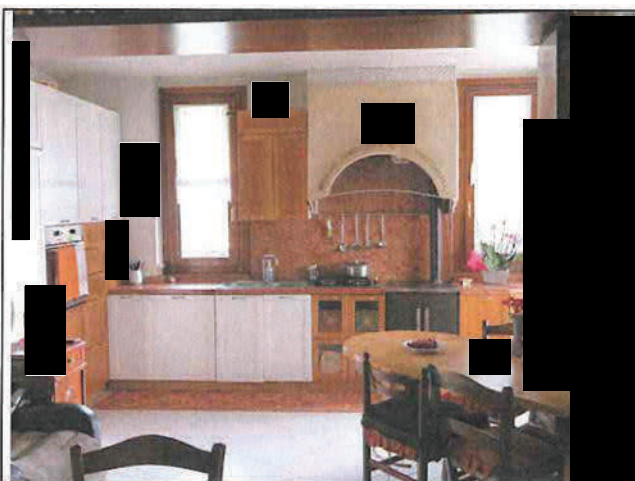


Foto n°17: Angolo cottura

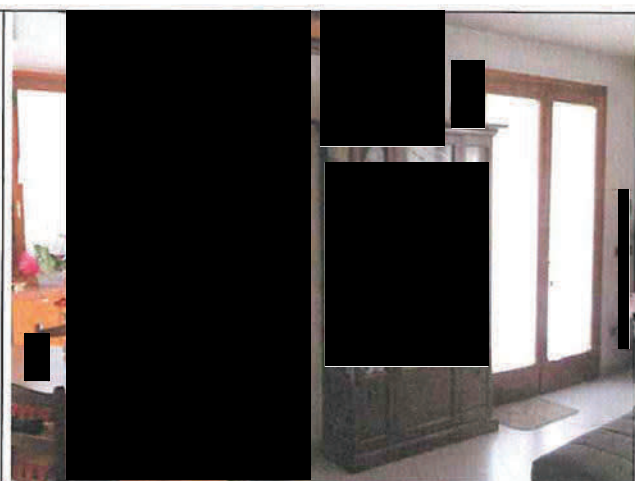


Foto n°18: Ingresso



Foto n°19: P.1: Soggiorno

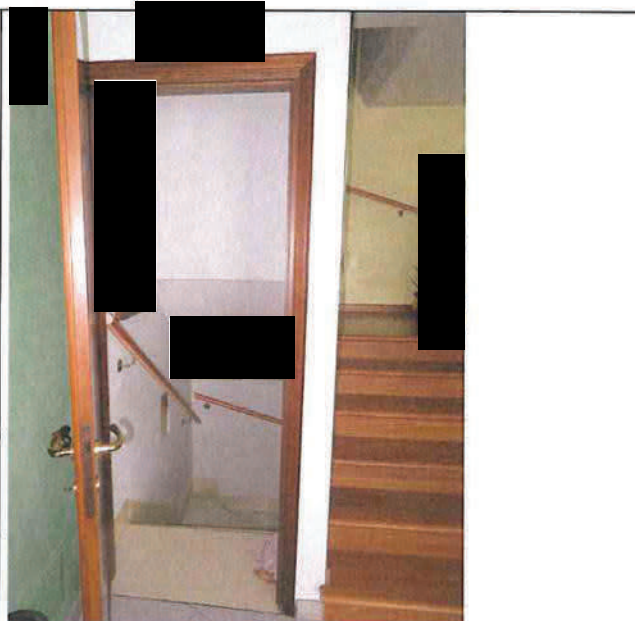


Foto n°20: Scale per P.S1 e P.1°

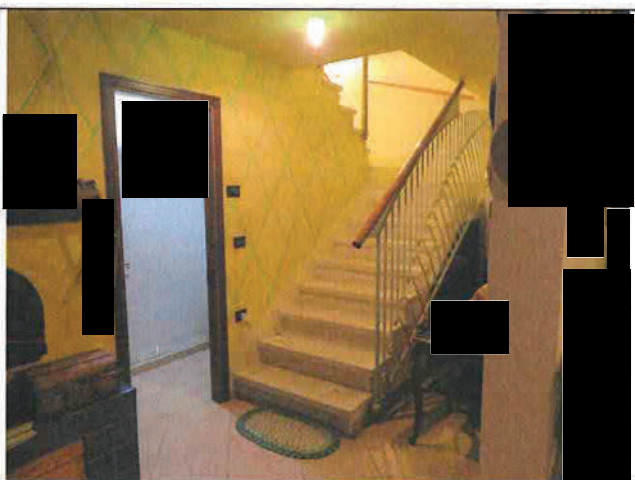


Foto n°21: Sottoscala P.S1



Foto n°22: Cantinato vista est

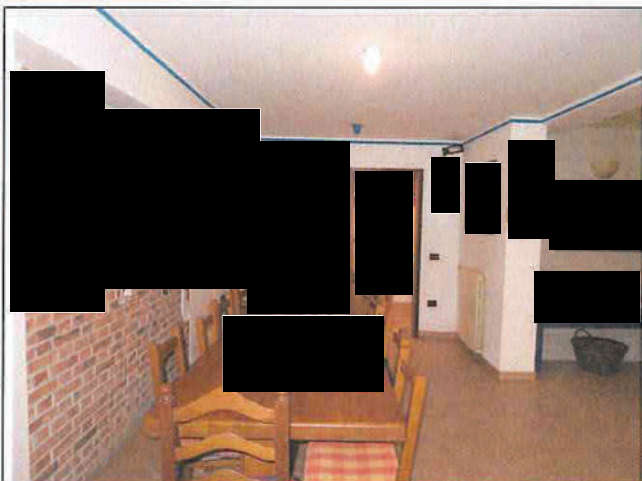


Foto n°23: Vista ovest cantinato



Foto n°24: Vista angolo cottura

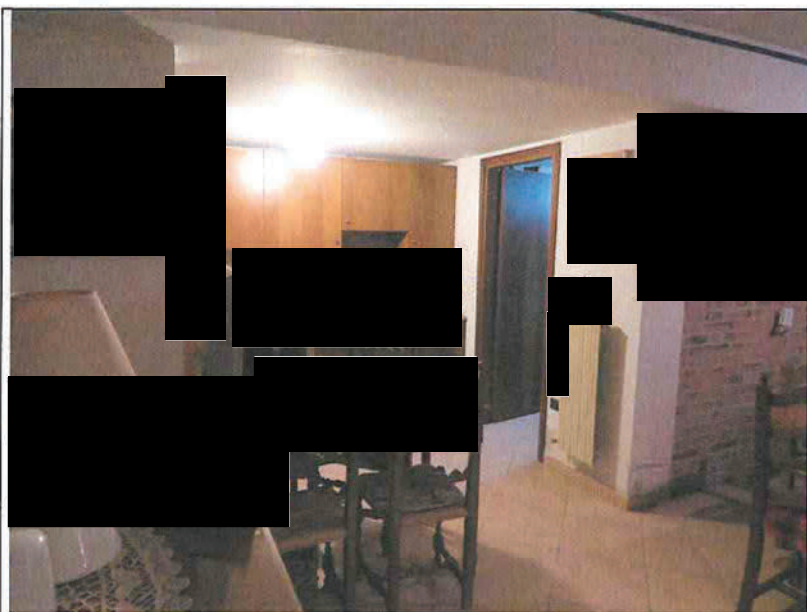


Foto n°25: Angolo cottura con ripostiglio

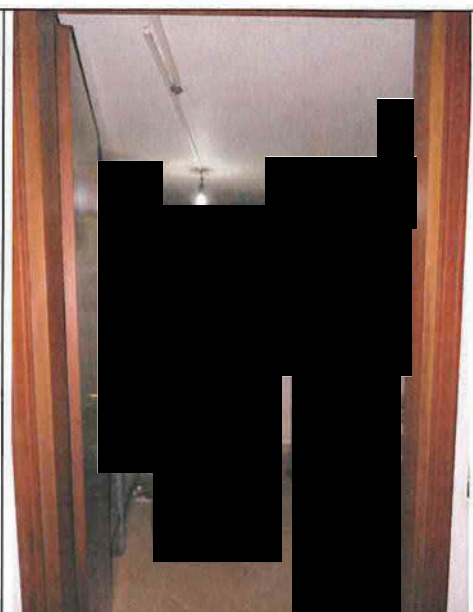


Foto n°26: Ripostiglio

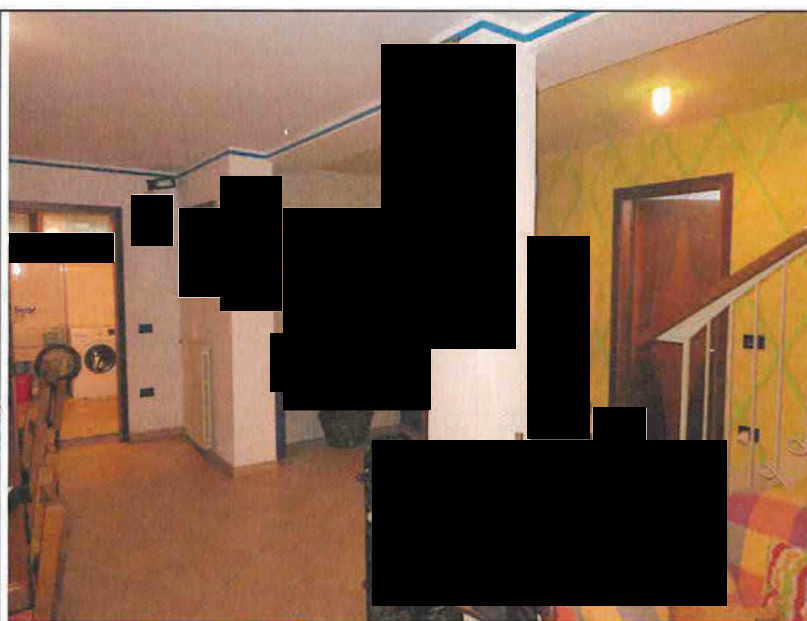


Foto n°27: Altra vista

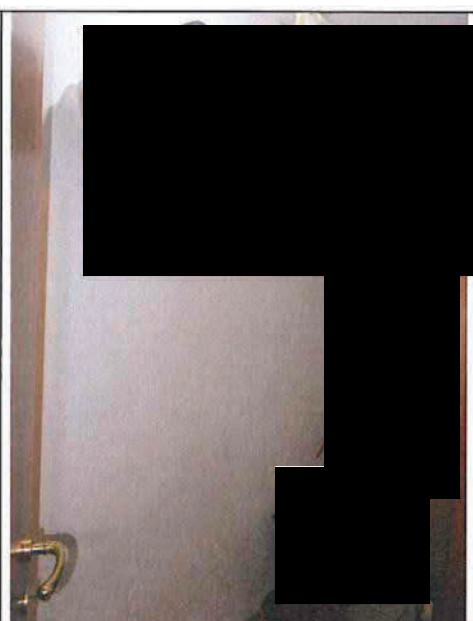


Foto n°28: Sottoscala



Foto n°29: Lavanderia ad ovest

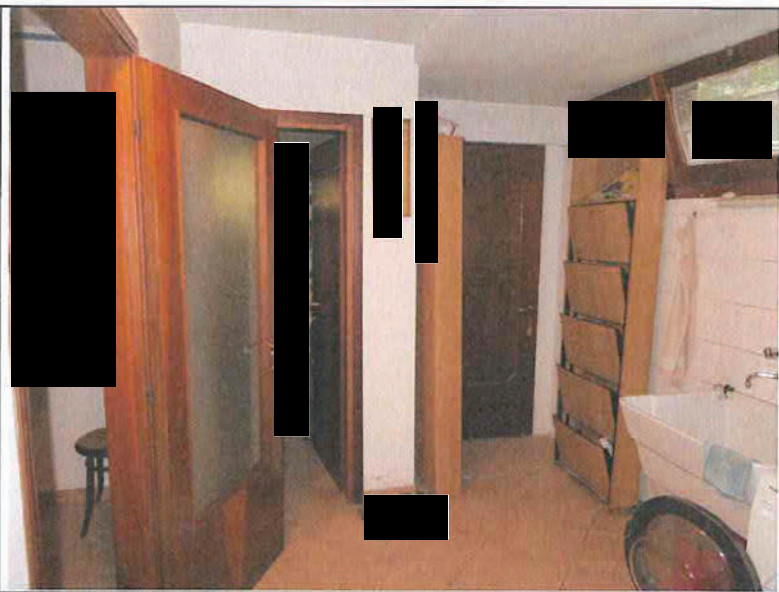


Foto n°30: Lavanderia con accesso a dx per cavedio e a sx per ripost.

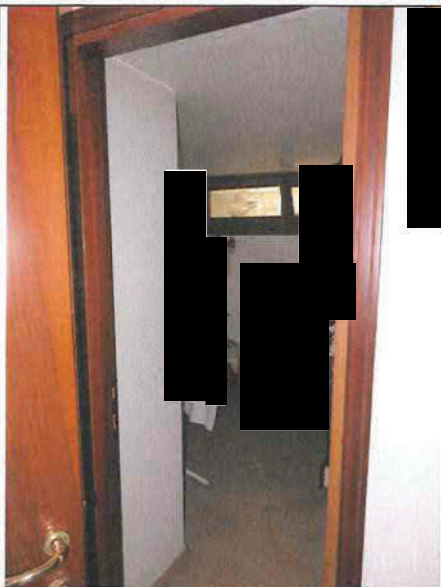


Foto n°31: Ripostiglio

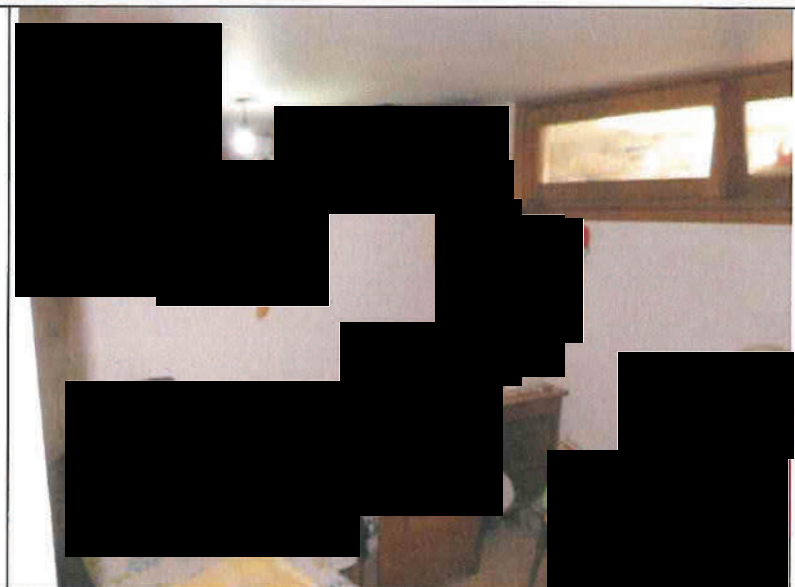


Foto n°32: Ripostiglio



Foto n°33: Cavedio a sud-ovest

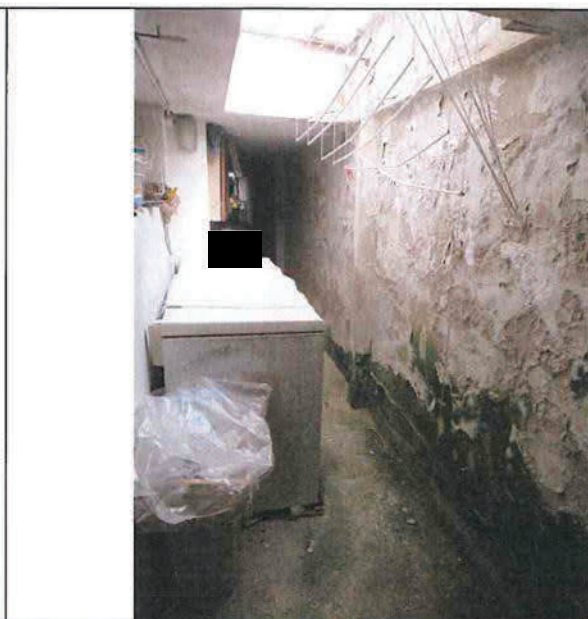


Foto n°34: Porzione cavedio a sud

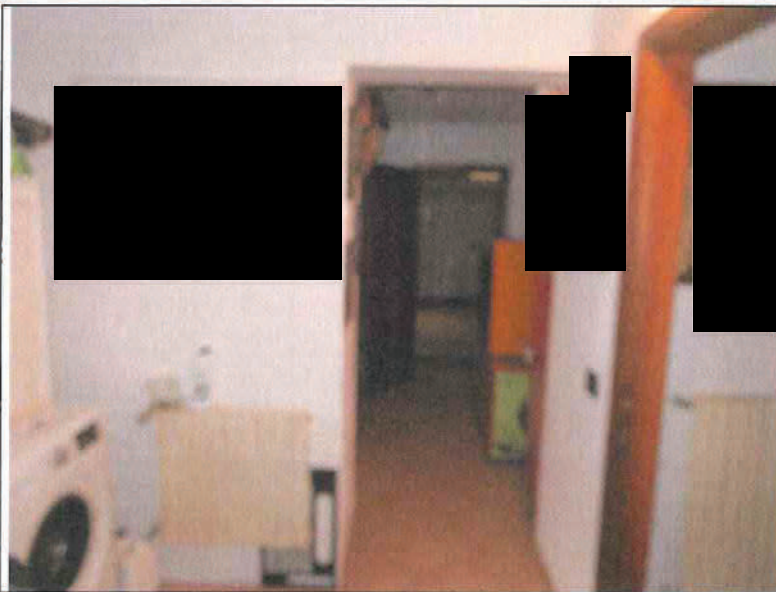


Foto n°35: Disimpegno



Foto n°36: Servizio igienico



Foto n°37: Sgombero rurale con accesso a cavedio lato ovest

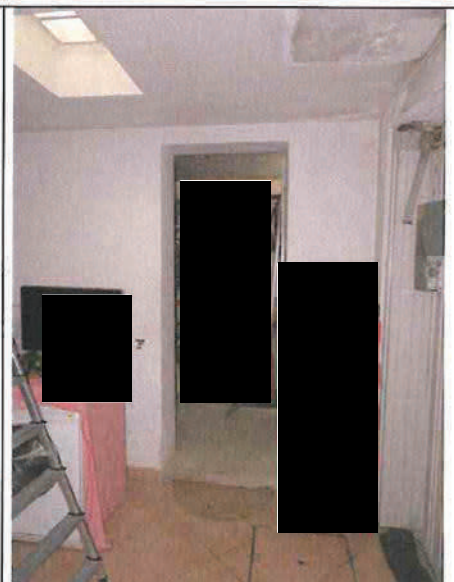


Foto n°38: Accesso cavedio



Foto n°39: Cavedio lato ovest

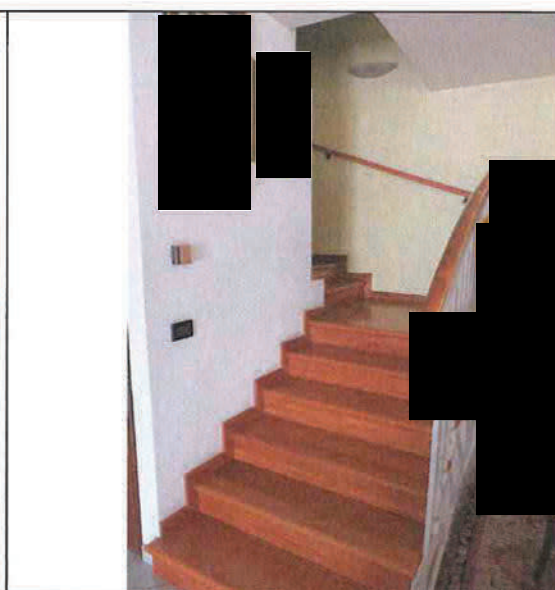


Foto n°40: Scale al P.1°



Foto n°41: Disimpegno



Foto n°42: Bagno ad ovest

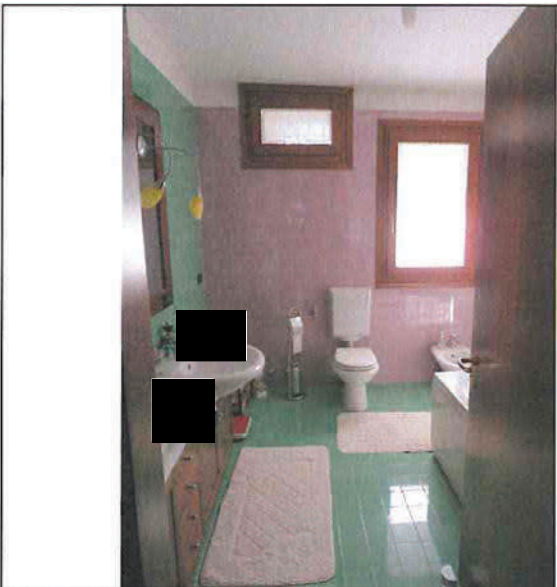


Foto n°43: Bagno ad ovest

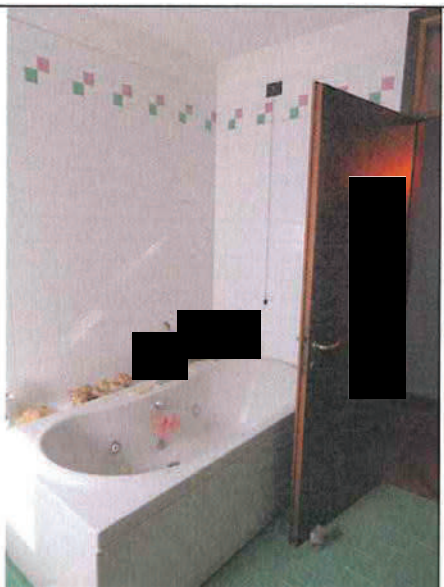


Foto n°44: Bagno ad ovest



Foto n°45: Camera da letto



Foto n°46: Guardaroba

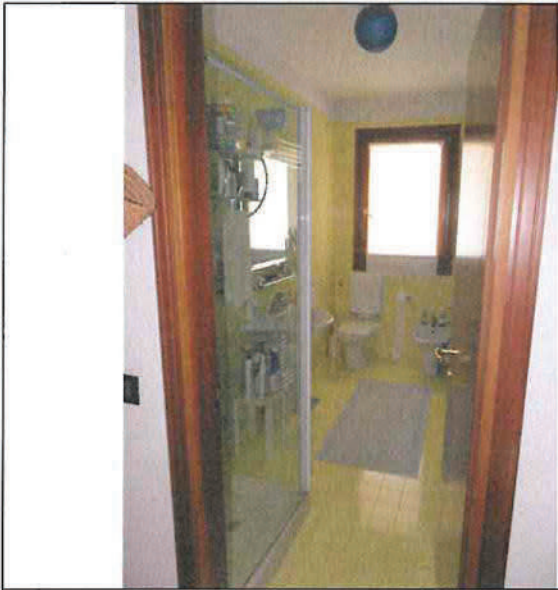


Foto n°47: Bagno a nord



Foto n°48: Camera matrimoniale ad est



Foto n°49: Camera matrimoniale ad est



Foto n°50: Mapp. 853

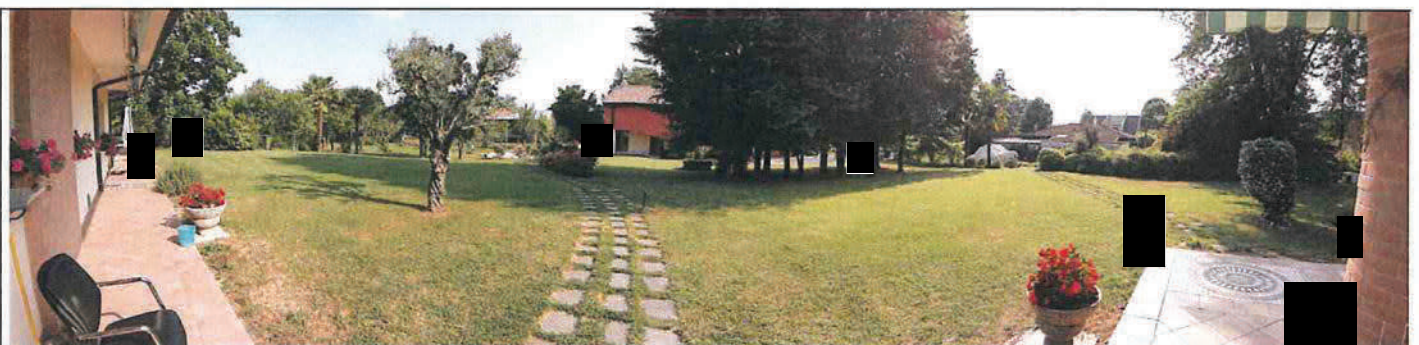


Foto n°51: mapp.656 e 853 parte ad ovest