

RELAZIONE FOTOGRAFICA

ALLEGATO al VERBALE 1° SOPRALLUOGO del 17.02.2018

- Ricognizione dei luoghi-l'esterno.

-Rilievo fotografico unità immobiliari oggetto di procedura N.R.G.E. 130/2017

identificati al N.C.E.U. al Foglio 24, Part.. 2750 Sub. 1 (ex Part. 2751 e Part. 2749 Sub.1aggraff. alla Part. 2750)

(Via Ripetta n° 6, Mistretta - Messina)



ORTOFOTO SATELLITARE_Fonte Google Maps

Il consulente tecnico della

Arch. Daniela D'Andrea





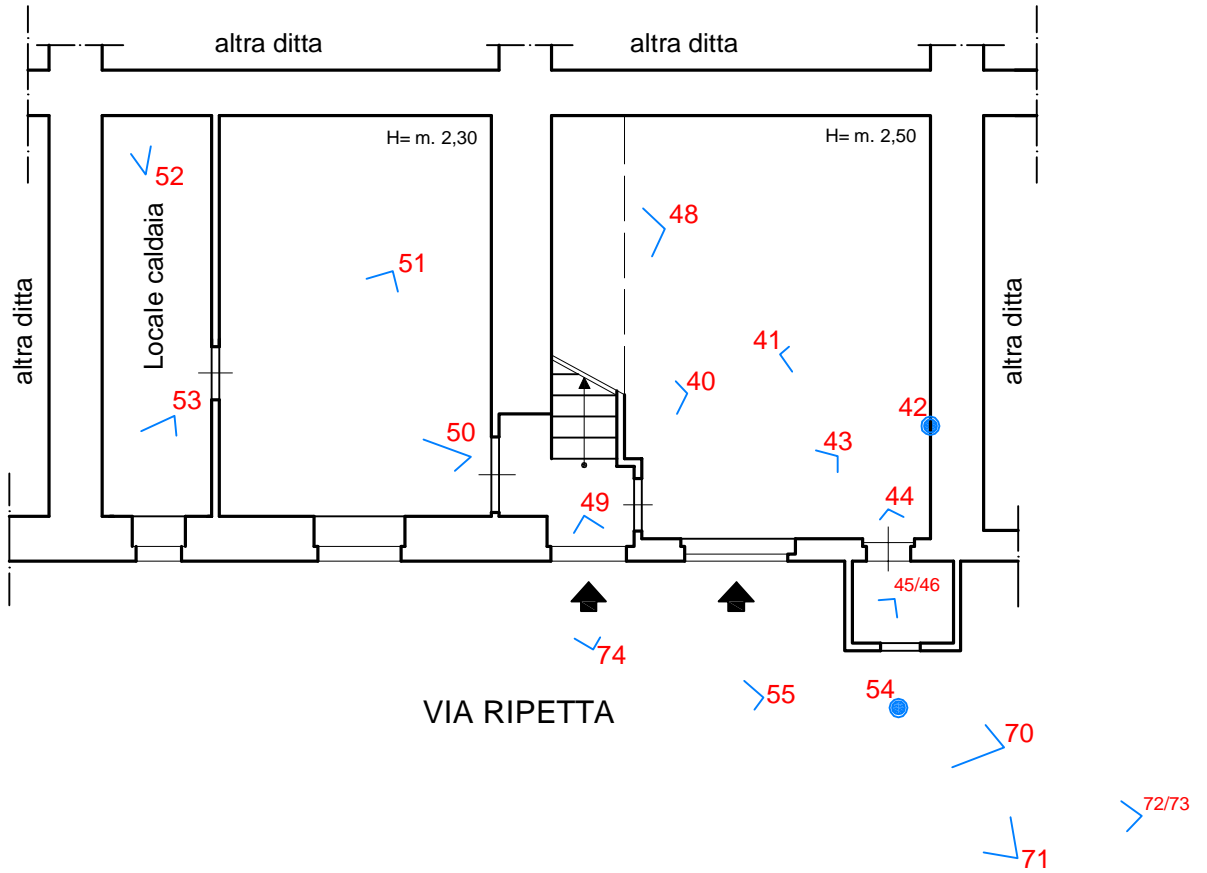
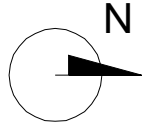
ORTOFOTO SATELLITARE_Via Ripetta n°6 - Mistretta (ME)
- Fonte Google Maps



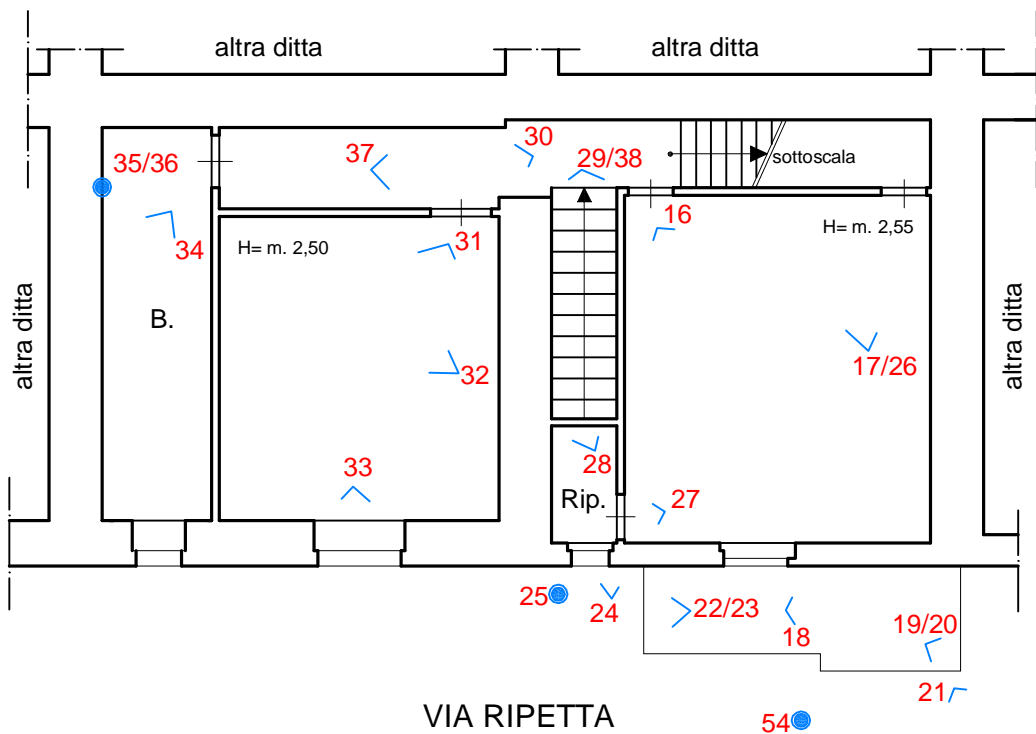
STREET VIEW_Via Ripetta n°6 - Mistretta (ME)



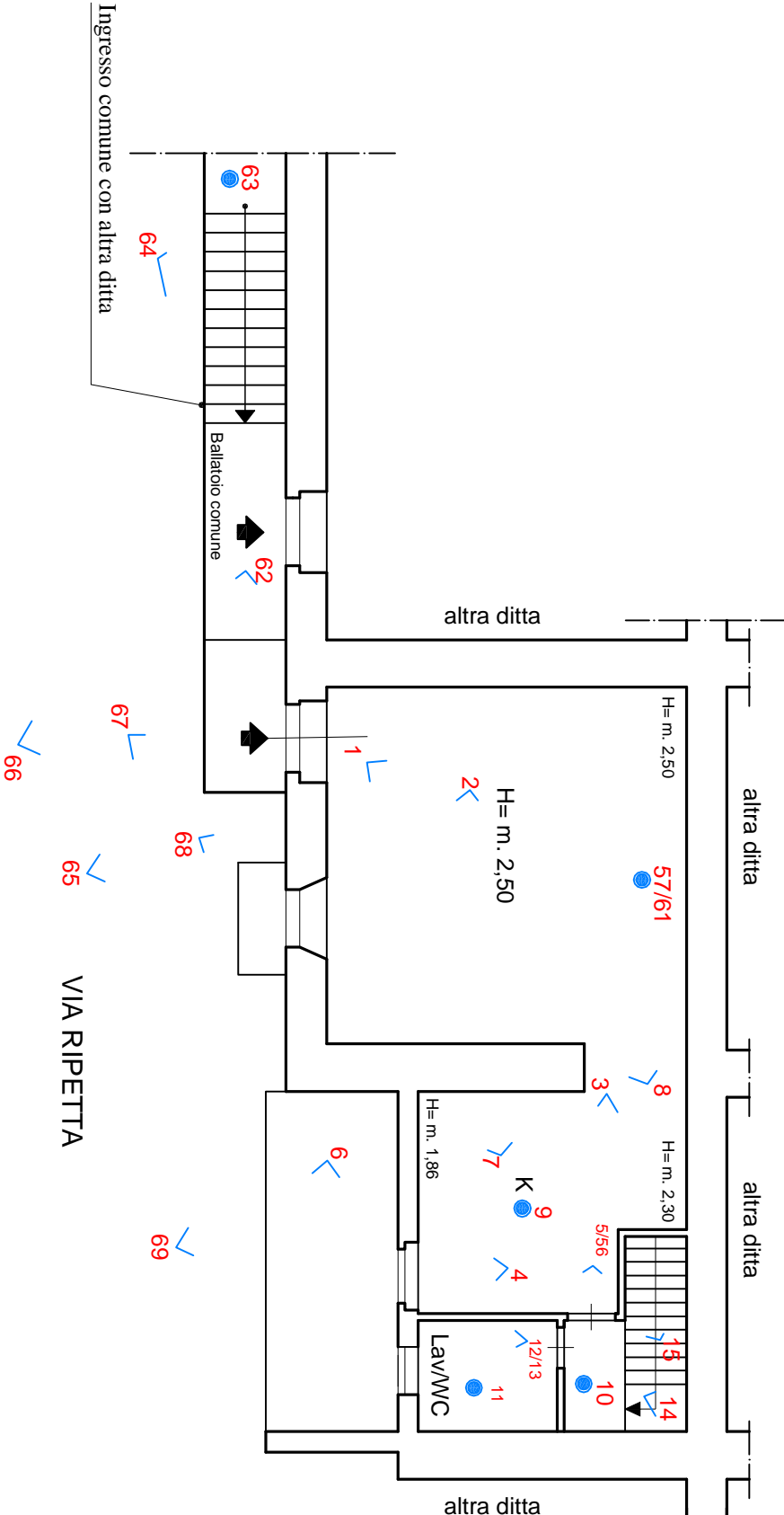
PIANTA PIANO TERRA rapp. 1:100



PIANTA PIANO PRIMO rapp. 1:100



PIANTA PIANO SECONDO rapp. 1:100





1



2



3





4



5

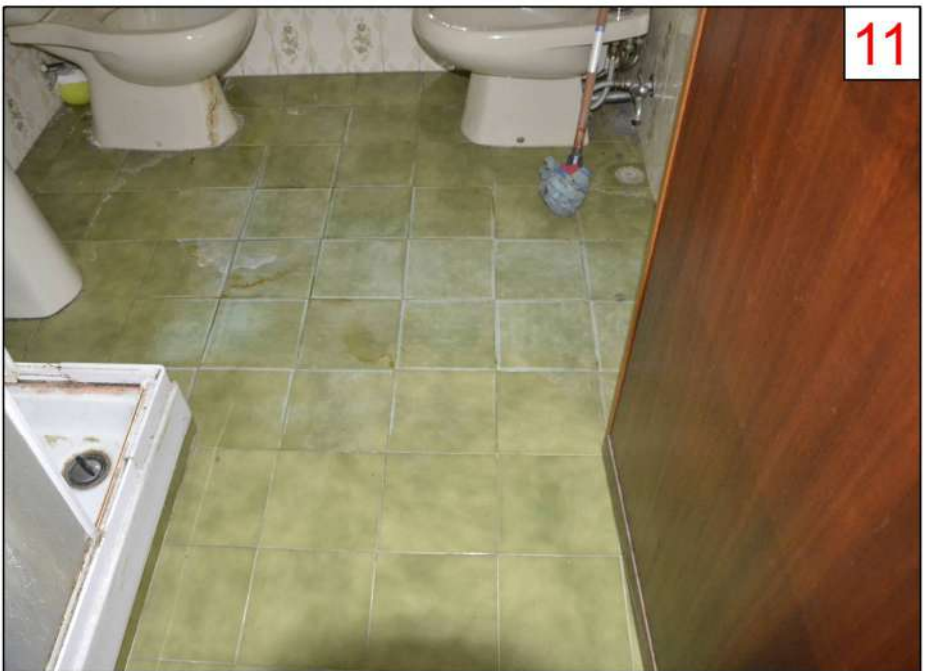


6

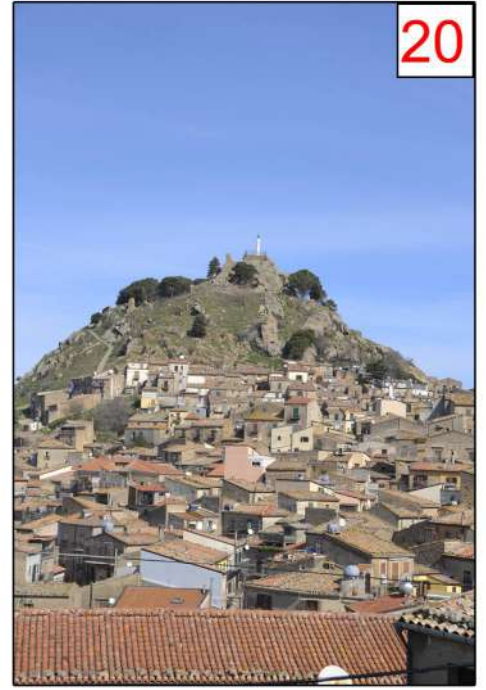
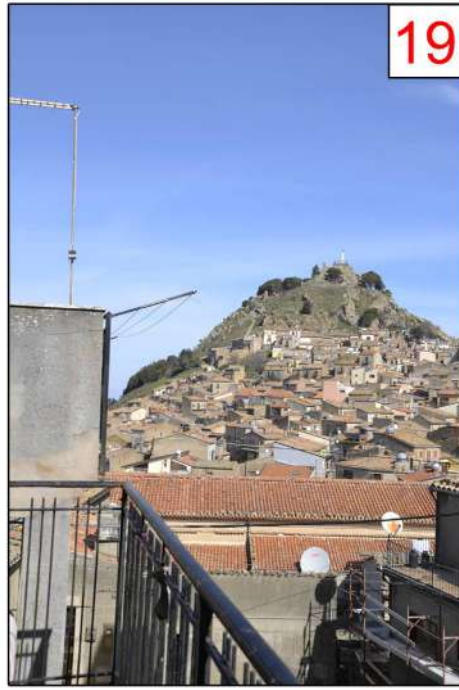


7

























Il consulente tecnico

Arch. Daniela D'Andrea

