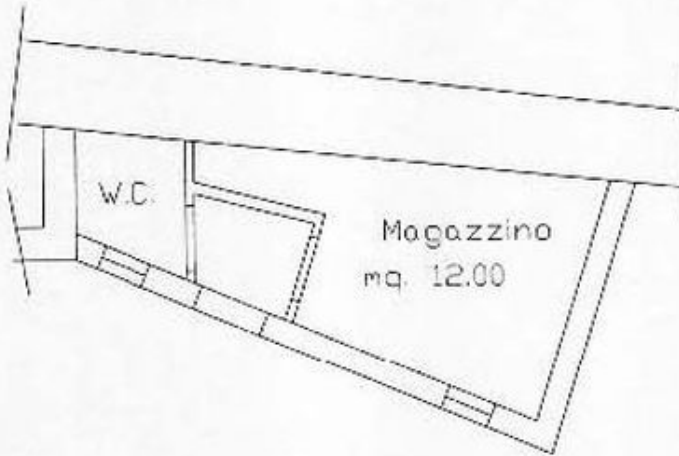


COMUNE di FRANCAVILLA S.S.

Foglio N.10 P.lla 1082 sub. 4

PIANO TERRA



Il C.T.U. geom. Carmine Cataldi

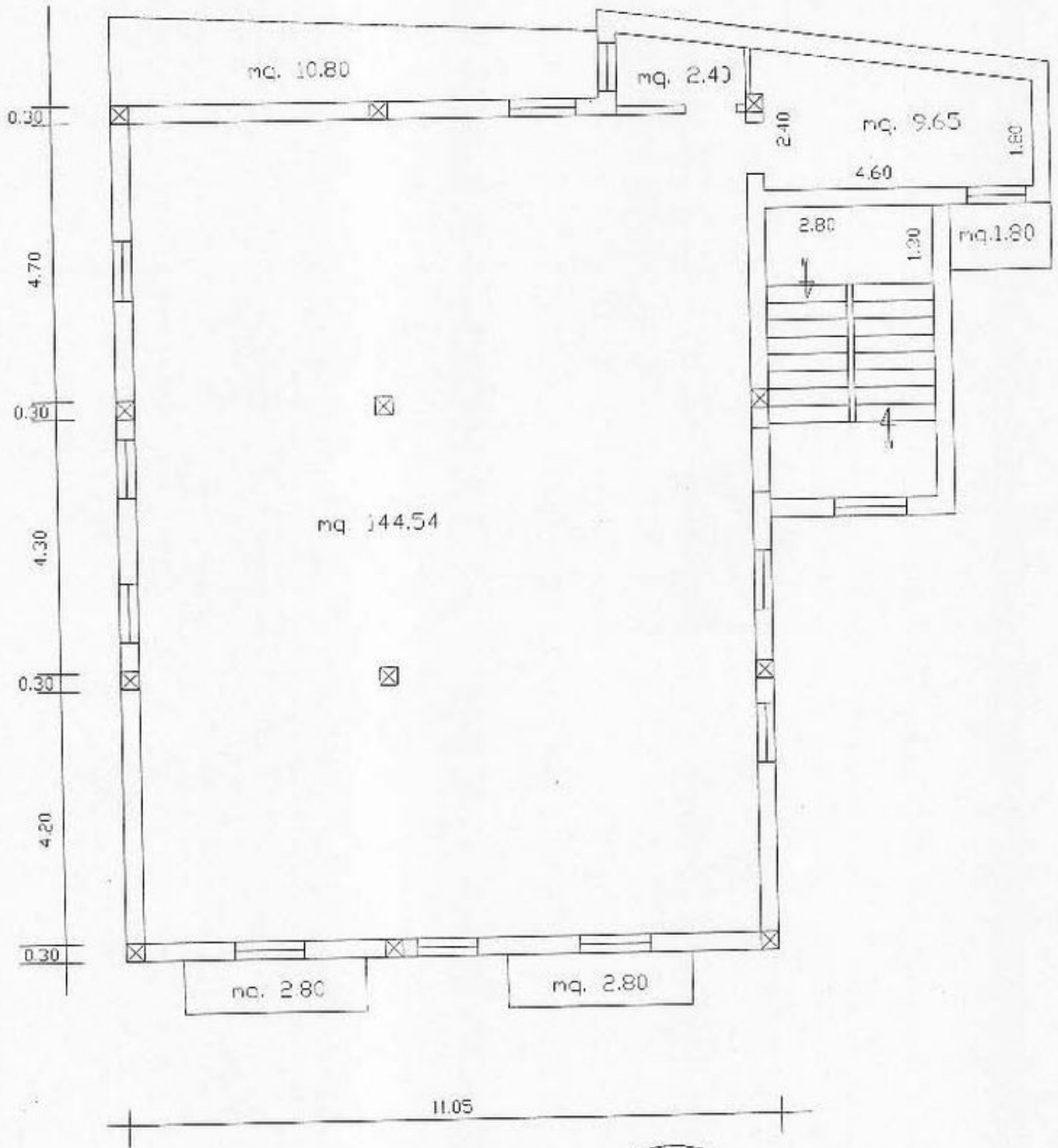
A circular professional seal for the Geometric Surveyor (Geom. Carmine Cataldi) is located at the bottom center. The seal contains the text 'ALTA SEDI' and the number '2129'. A handwritten signature is written over the seal.

COMUNE di FRANCAVILLA S.S.

Foglio N.10 P.lla 1082 Sub 6

Foglio N.10 P.lla 1083 Sub 4

PIANO SECONDO



Geom. CATALDI C.
CTU geom. Carmine Cataldi
2129