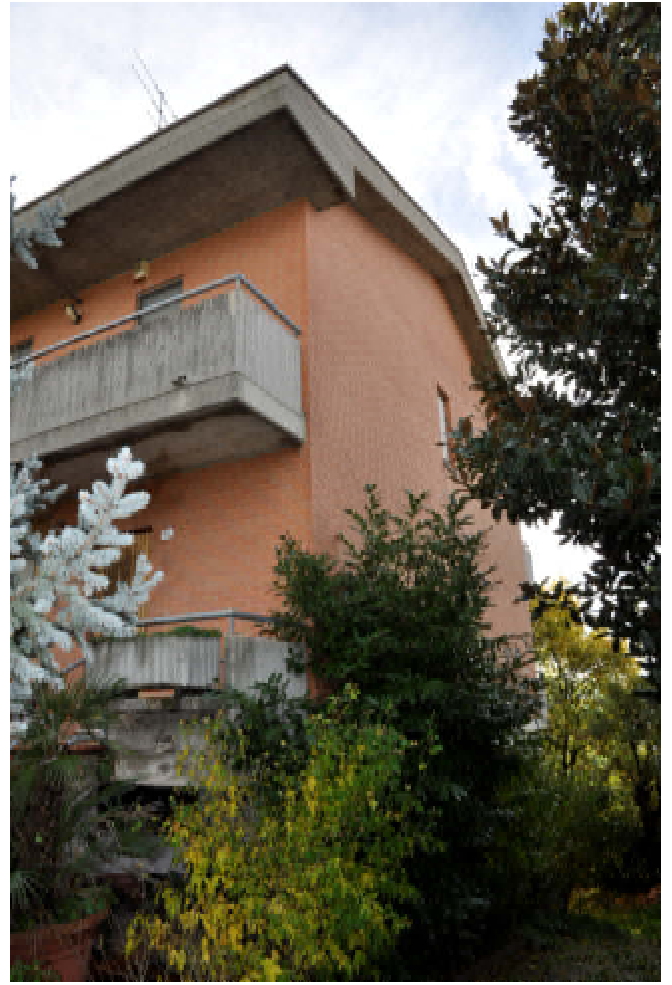


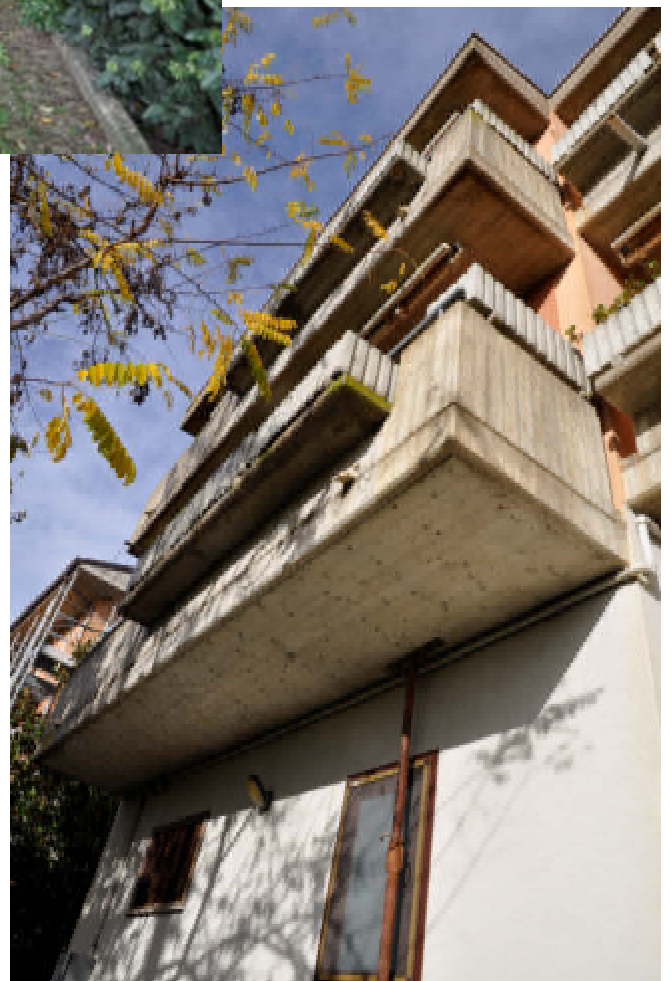
***DOCUMENTAZIONE FOTOGRAFICA***



# ESTERNO







INTERNO

Soggiorno



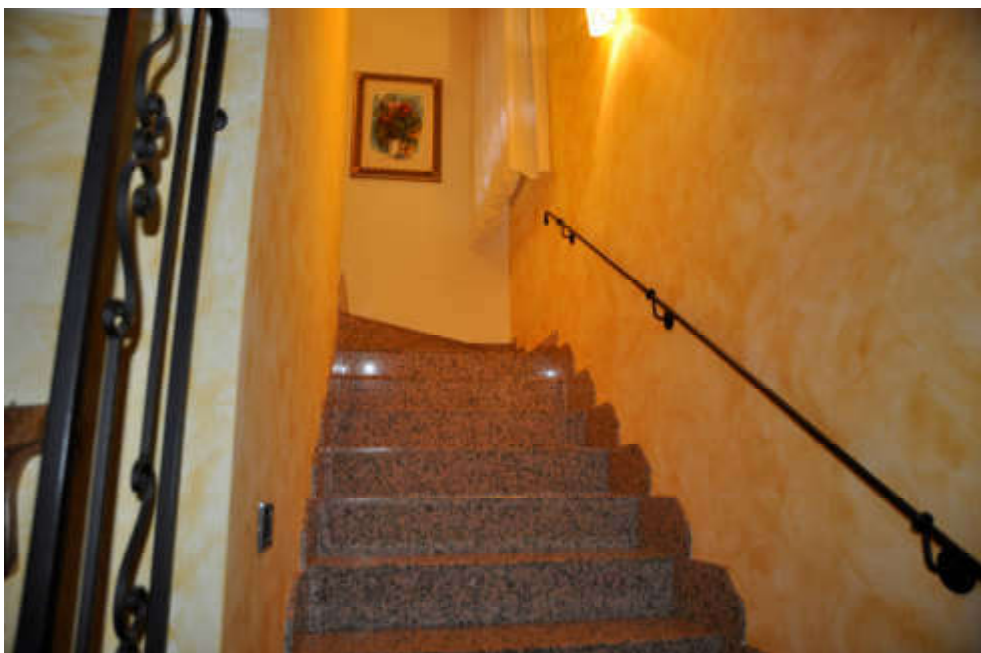




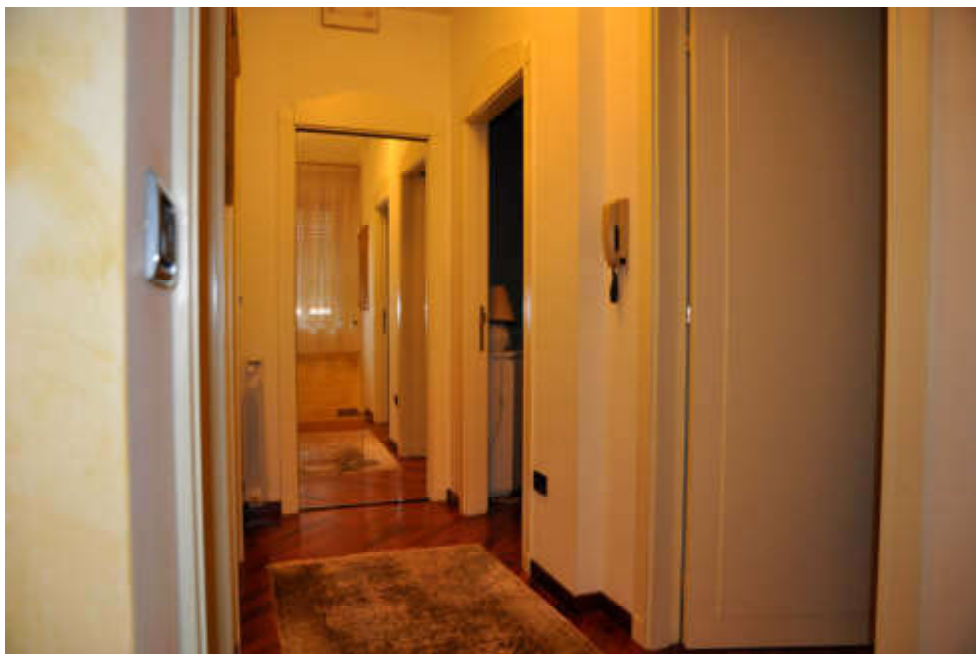
Cucina



Bagno piano terra



Scala



Corridoio piano primo



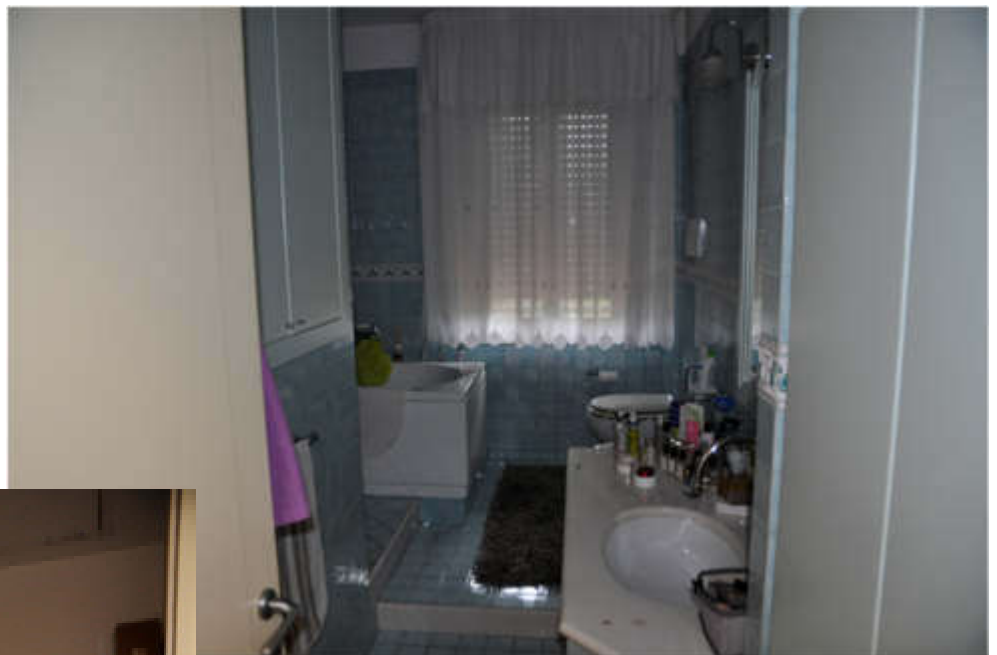
Camera 1



Camera 2



Camera 3



Bagno piano primo



Ripostiglio piano primo





Sottotetto



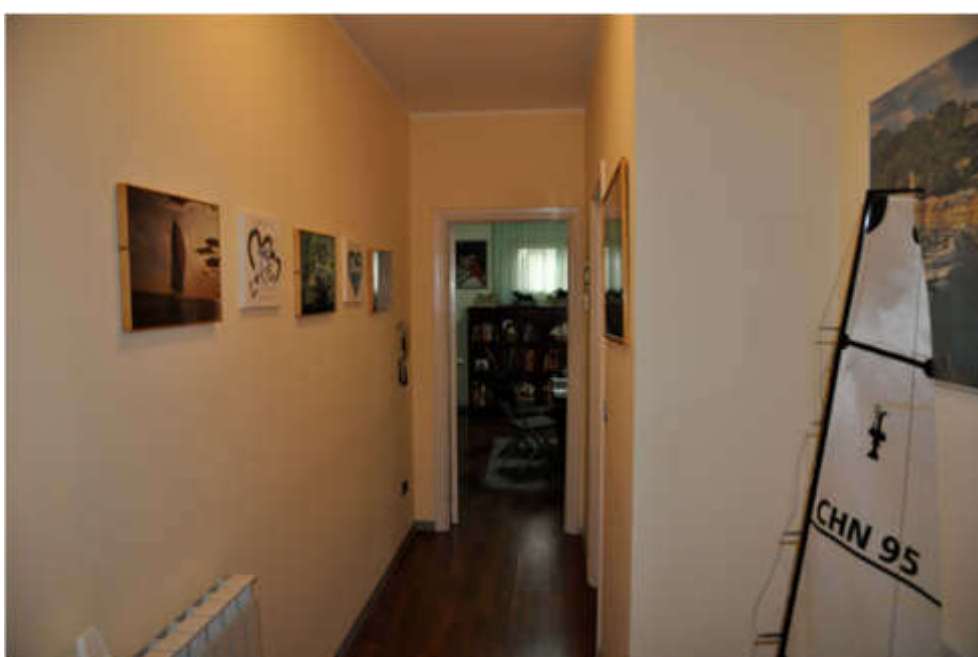
Balcone nord



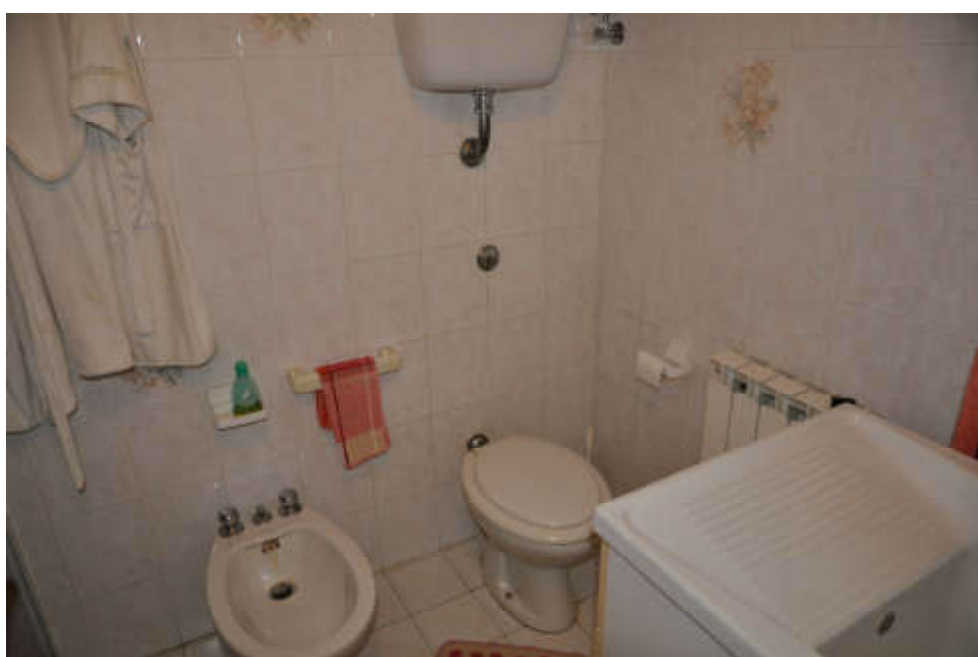
Balcone sud



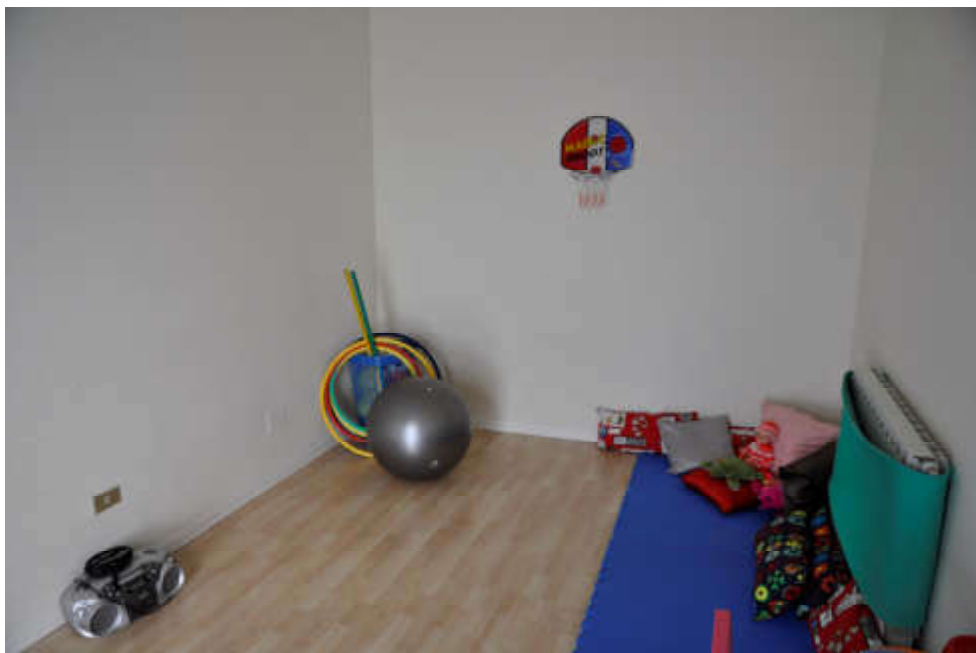
Scala



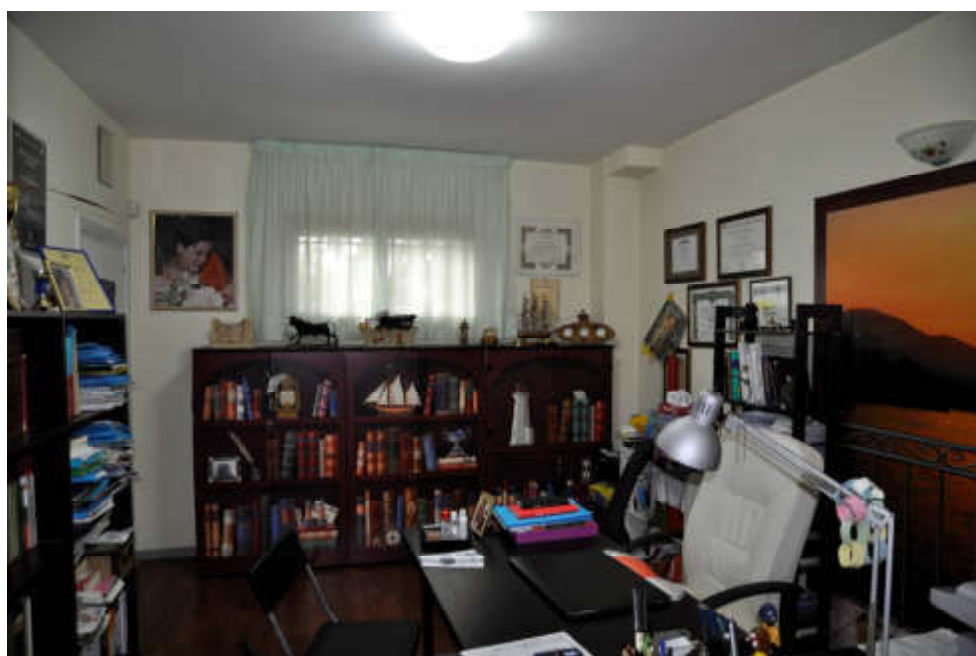
Corridoio piano sottostrada



Bagno piano sottostrada



Sala giochi



Studio



Cantina





Autorimessa