

TRIBUNALE di BERGAMO

ufficio esecuzioni immobiliari

Procedura n° 880/2018 R.G.

**LOTTO 1
ALLEGATO M**

DOCUMENTAZIONE FOTOGRAFICA

Ing. Anna Spini

Studio tecnico in Trescore Balneario (BG) - via la Torretta n. 2 -

tel. 035/943637 - e-mail: anna.spini@ingpec.eu



vista edificio condominiale da via Provinciale





ingresso locale commerciale seminterrato



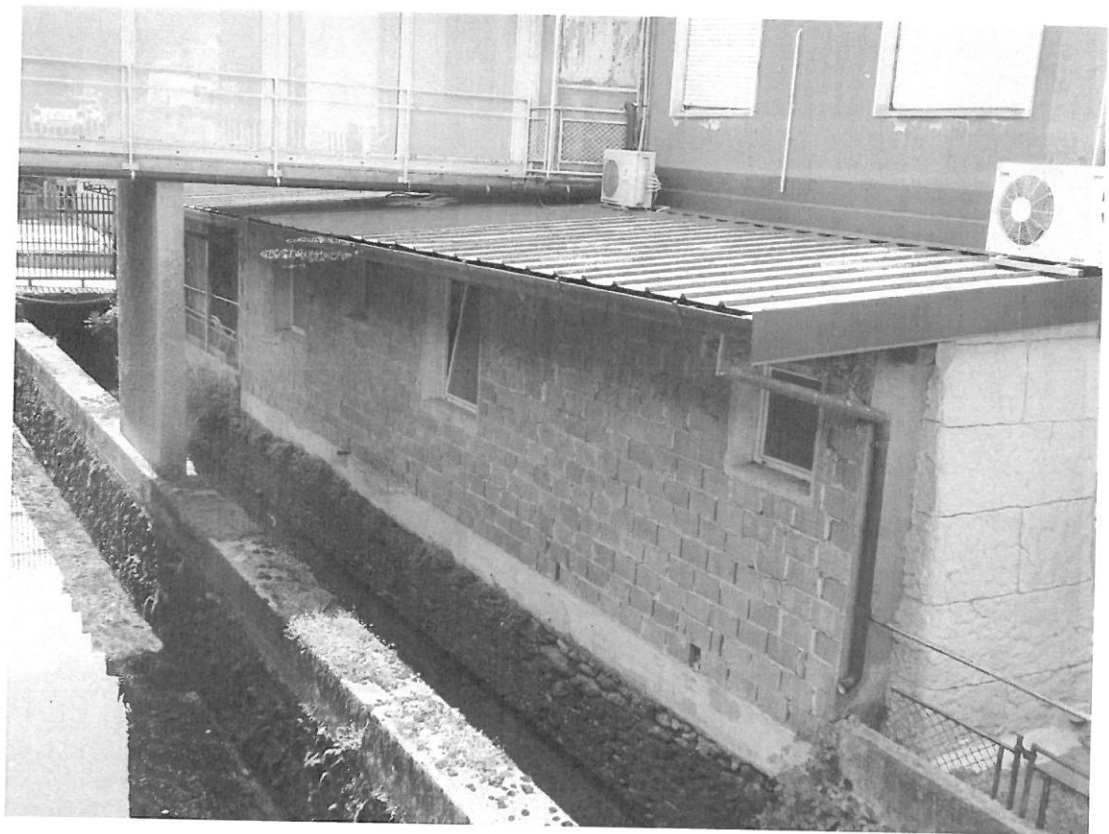


vista fronte sud-ovest e lato tettoia esterna





vista fronte sud-est su roggia / canale





area esclusiva ingresso e ripostiglio esterno

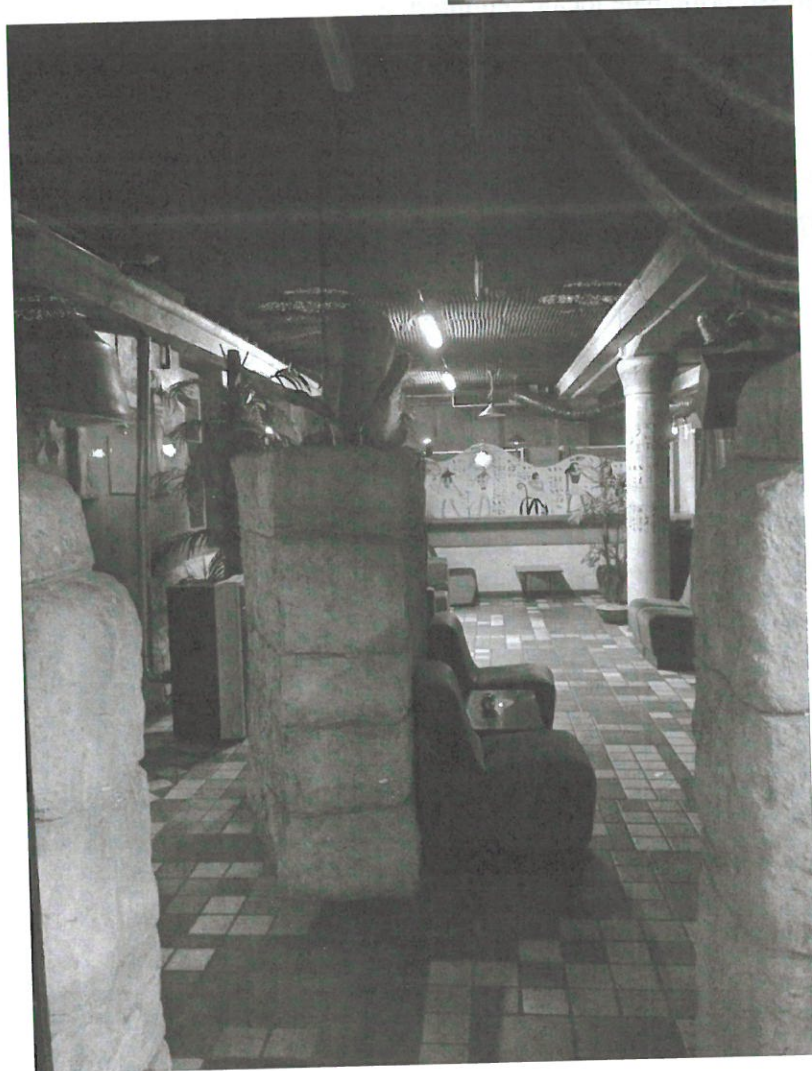


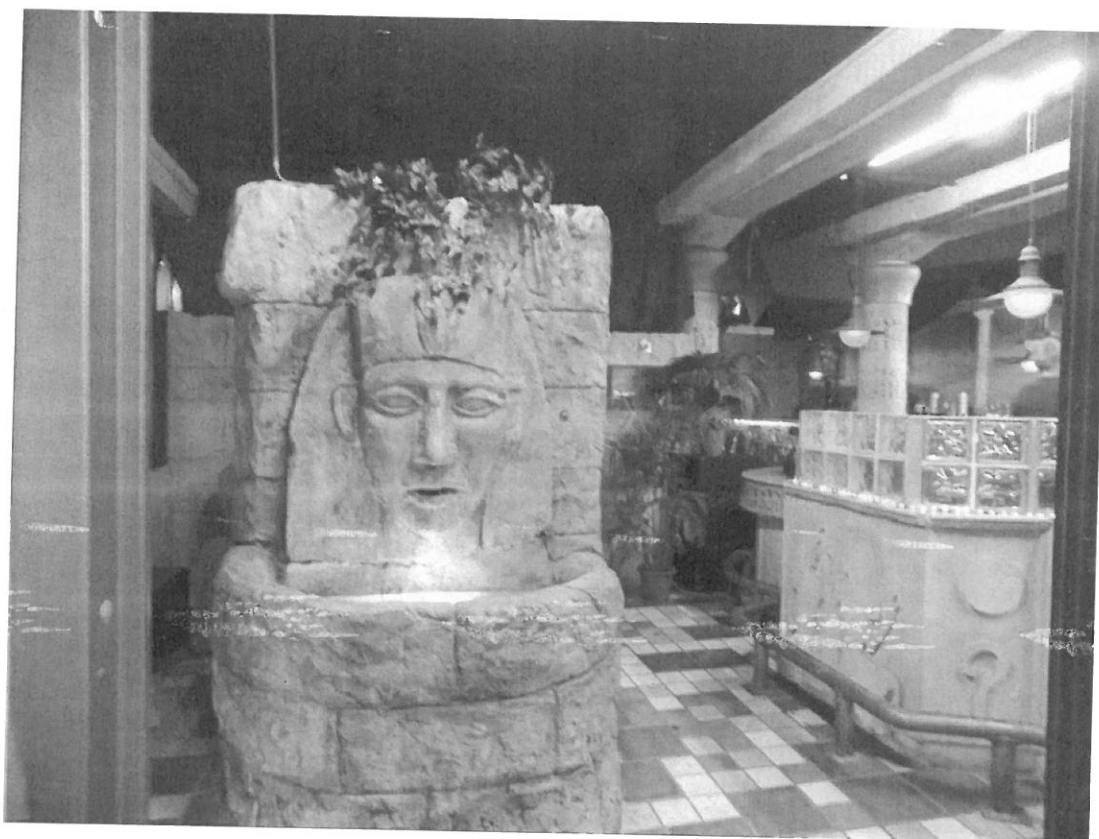


ingresso principale locale seminterrato

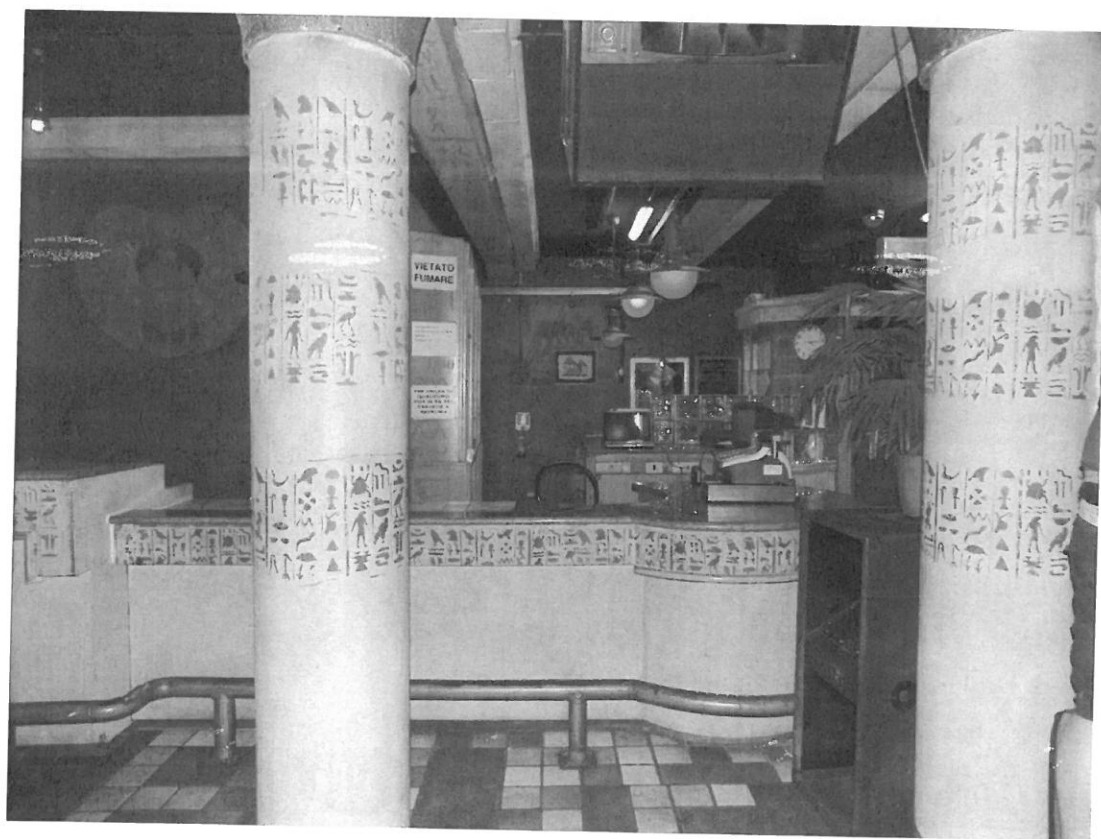


locale commerciale
zona ingresso





zona ingresso e sala

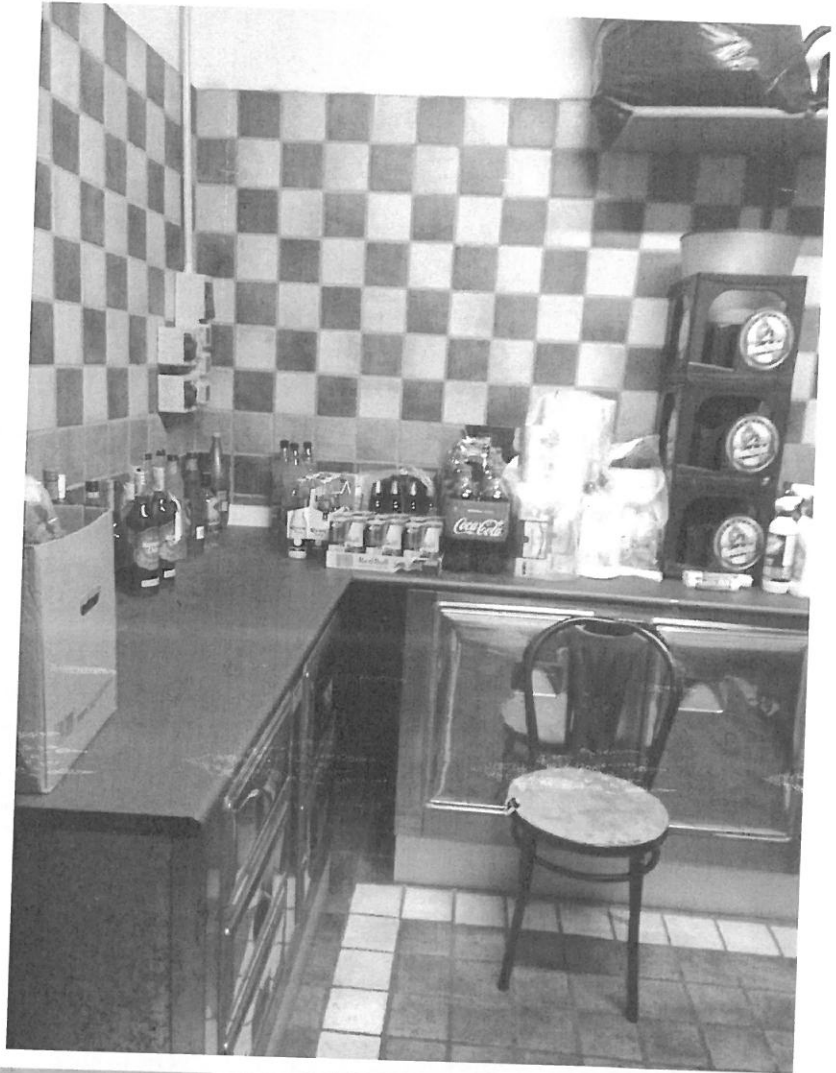




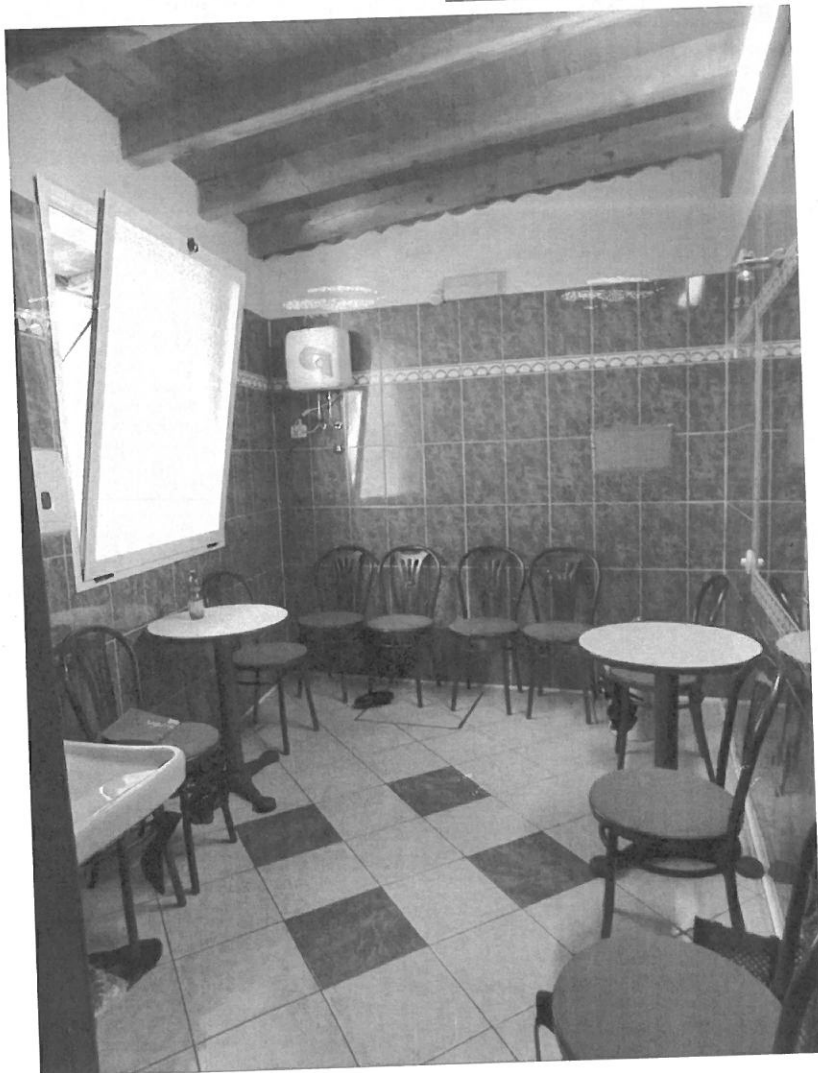
zona sala centrale

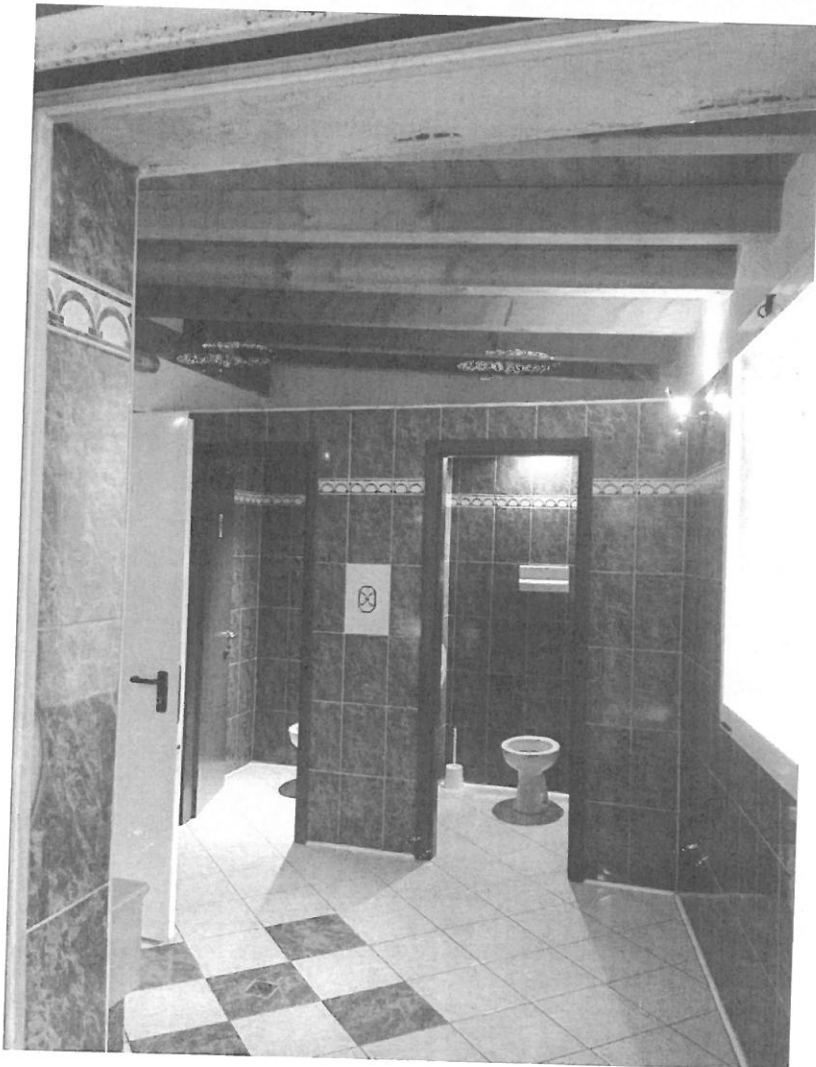
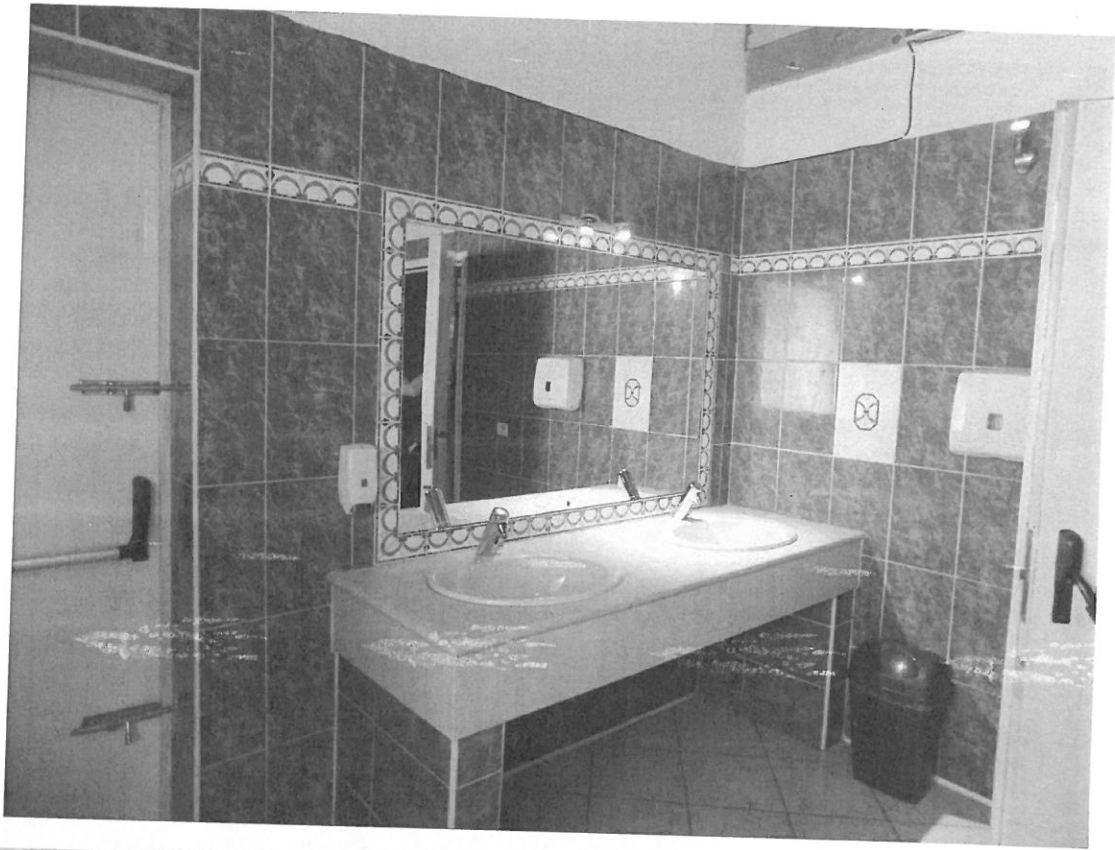


locale ripostiglio



primo blocco
servizi / wc





secondo blocco
servizi / wc



tettoia esterna



tettoia esterna

