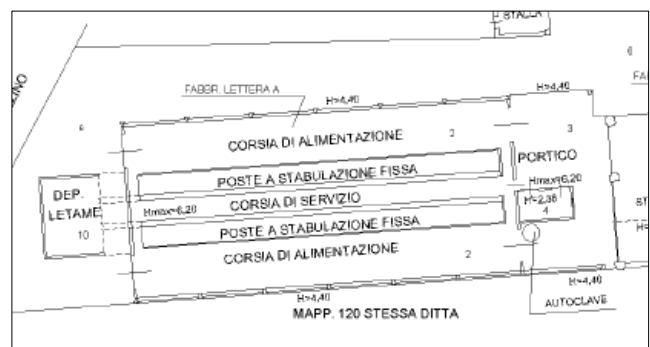
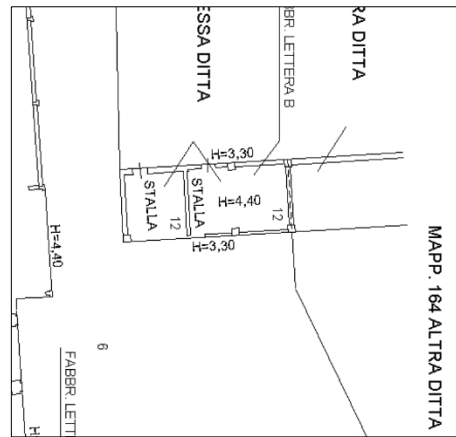
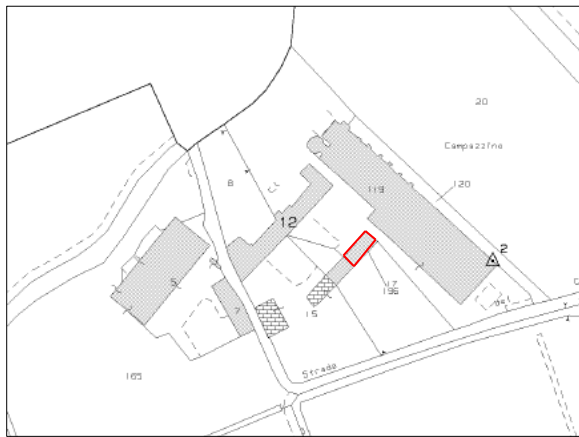


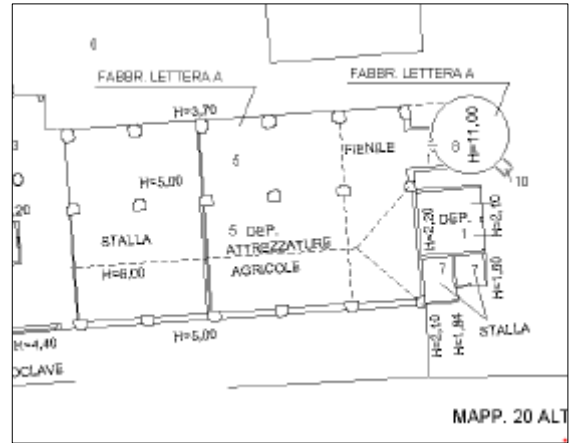
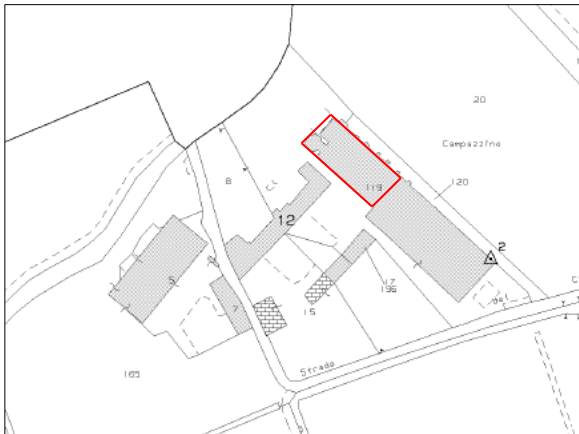
**ALLEGATO "1" - Descrizione fotografica – Perizia estimativa RGE 84/21
- Livraga (LO), Cascina Campazzino -**

Localizzazione immobile

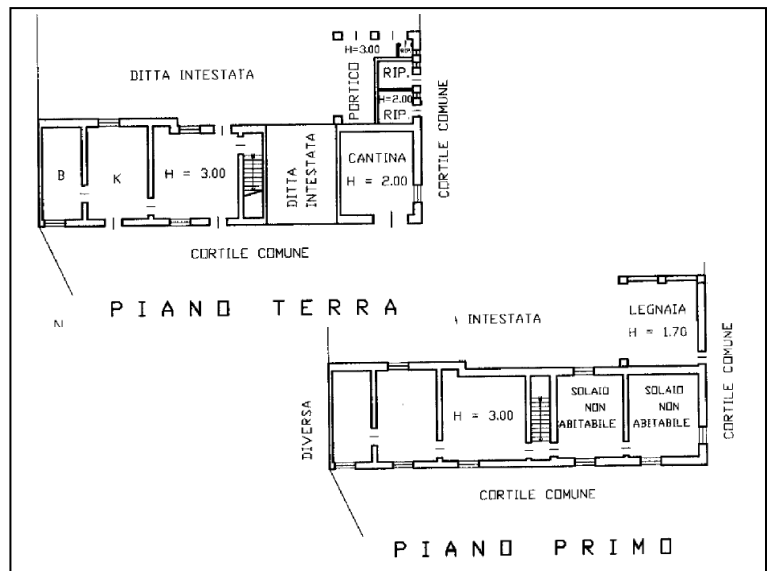
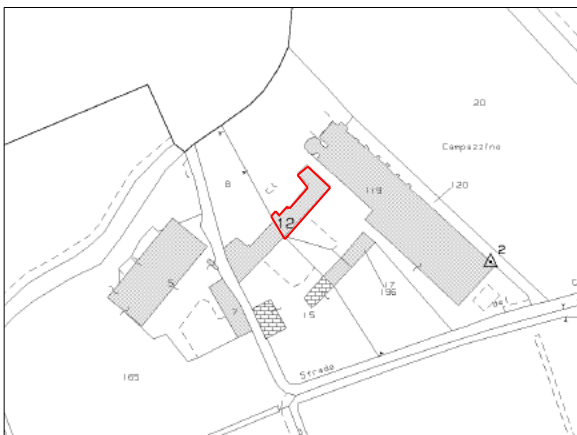


Stalle - Fig. 1 mapp. 17 sub. 701 – mapp. 119





Abitazione con cantina, ripostiglio e legnaia - Fig. 1 mapp. 12 sub. 703



Cucina



Bagno



Soggiorno



Camera



Camera



Camera



Camera



Cantina



Ripostigli



Portico



Legnaia



Area verde retro abitazione



Box - Fig. 1 mapp. 12 sub. 704

